

ESAT high-pressure welding fume extractor

🔗 Sectors [Welding](#),

🔗 Applications [Mobile](#)

🔗 Issues [Fumes](#)

COD: ESAT000000000000



ESAT high-pressure purifying aspirator, to be connected to a maximum of two SAT line suction torches, specifically designed for industrial use in continuous operation (100% duty cycle) thanks to its robust aluminum blower/turbine with a leading brand three-phase motor. Mounted on a trolley with wheels.

Insight

Ideal solution for one or two welding stations and reintroduction of fumes into the environment (where permitted, given the 98% filtration rate at 0.3μ in class 10) or direct expulsion to the outside.

Technical characteristics

- Maximum 2 torches simultaneously
- Power 2200Watt 400/3/50
- Flow rate 240 m³/h
- Noise level 71 dB
- Dimensions 500w x 600h x 650d

Automatic activation during arc ignition makes it completely automatic without wasting time.

If a centralized extraction system is in place, given the very low air flow rate, the exhaust of this extractor can be connected directly to the system, with the advantage of not having to report new chimneys emitting into the atmosphere.

Wall-mounted version available on request.



Dimensions

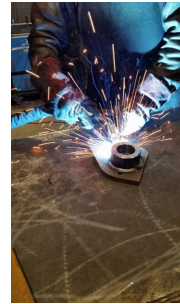
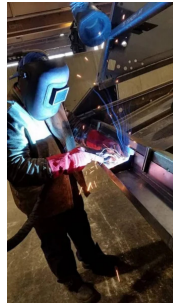
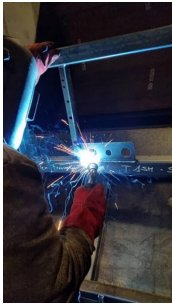
| Code | b mm | h mm | P mm |
|------------------|---------|---------|---------|
| ESAT000000000000 | 500 | 600 | 650 |

Technical Data

| Code | Power W | Nominal flow rate m ³ / h | Useful pressure Pa | Weight kg | Noise level dB |
|------------------|---------------------------|---|-----------------------|--------------|-------------------|
| ESAT000000000000 | 2200 400/3/50 three-phase | 240 | 20000 | 58 | 71 |



Photogallery



Related Products



High pressure welding fume extractor GTC1A22

GTC1A2200000000

GTC1A22 mobile welding fume extractor with integrated micrometric filtration, for optimal high-pressure extraction of fumes through two welding extraction torches simultaneously or from other applications requiring small-diameter pipes.

