

# MFU-HW welding fume extractor with superflex arm

📌 Sectors [Welding](#)

📌 Applications: [Mobile](#)

📌 Issues [Fumes](#)

COD:

MFU21HWXF000000



Mobile extractors for welding fumes and micro-dust, high performance for professional use, with HEPA H13 99.99% absolute filtration



## Detailed description

Don't breathe in **fumes and micro-dusts released into the environment during welding!** Rely on HEPA H13 filtration to abate welding fumes and micro-dusts by using an **MFU welding fume extractor**, specifically designed to extract and filter fumes and micro-dusts generated by metal welding processes, filtering 99.99% of particles over 0.3µm. MFU series mobile extractors represent the ultimate in technology for the drastic reduction of risks derived from fumes and micro-dusts within professional work environments. The pollutants are quickly sucked in at the source thanks to the high-capacity hood and are then filtered 99.99% thanks to HEPA technology, a guarantee of micro-dust abatement from 0.3µm and up.

For this reason, the MFU welding fume extractor is W3 certified compliant for the filtration of carcinogens as per EN 15102.

### Technical features

- High suction capacity: 1500 cu m/h
- Compact and handy structure;
- Self-supporting suction arm with SUPERFLEX piping working length mt 3 or 4;
- Room air recirculation with absolute filtration H13 HEPA - 99.99%
- W3 certificate compliant for filtration of carcinogens;
- Electrical panel included on board as per EN 15102 standards;
- Indicator light for filter clogging warning;
- Hour meter for machine maintenance record keeping;
- Single-phase plug and cable with shuko socket requires no electrical installations, is ready to use;
- High-capacity suction hood with handle for easy positioning.

### How it works

The welding fume extractor purifies the pollutants that pass through the system from the arm in the machine downward and are purified at 99.99% efficiency, the clean air is fed back into the room through grilles located at the bottom on the sides of the machine for maximum efficiency and energy saving.

### Safety as per regulations

The clogging level of the filters is monitored by a control that alerts with a light signal when the filters need to be cleaned or replaced, so as to avoid continuing work without air filtration.

### Construction

- Sturdy galvanized or painted steel support structure depending on the application, equipped with practical handles for handling;
- 4 pivoting wheels with brakes;
- Self-supporting suction arm of mt 3 or 4 depending on the model;
- Electrical panel with ventilation on/off control, hour meter and filter clogging warning light;
- Single-suction centrifugal fan in version directly coupled to single-phase asynchronous motor.





## ADVANTAGES

- Fast fume extraction near the source due to high flow rate.
- Mobile: allows a variety of welding spots to be reached.
- Filtration with absolute filter eff. H13  $\geq 99.99\%$  of particles over  $0.3\mu\text{m}$ .
- 1500W single-phase power can be connected anywhere with a simple shuko outlet.



## Advantages of purchasing with operating rental in 12/24/36 or 48 easy payments

- No down payment to be made, no pro-rata.
- First rent on average at about 30 days.
- Totally deducts royalties for IRES purposes with no obligations arising from the minimum contract term under the T.U.
- Totally deducts royalties for IRAP purposes without distinction between principal and interest.
- Basel 2 advantage: thanks to the rental, the asset used is "off-asset" and therefore does not require corresponding assets.
- All Risk insurance included in the fees to cover possible claims.
- Fixed rate for the entire duration of the transaction.

Partners **BCC Lease**

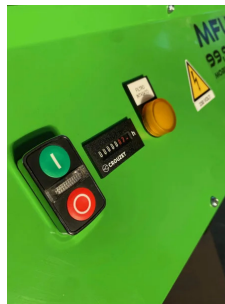
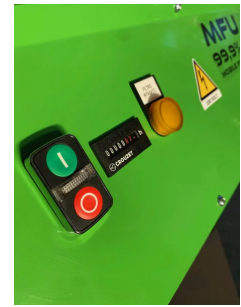
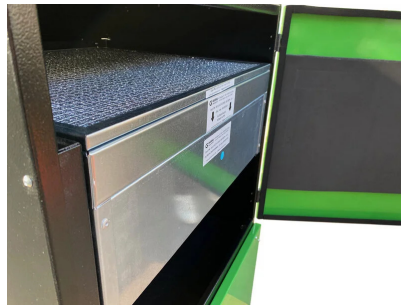
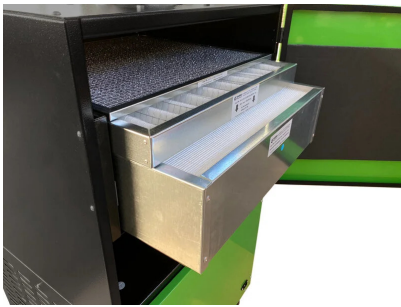


## Technical Data

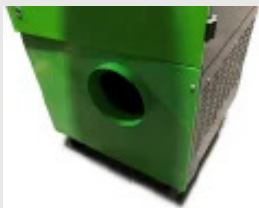
Code	Power kW	Nominal flow rate m <sup>3</sup> / h	Noise Db (A)	Weight kg	Operating temperature °C	Power supply V	Power supply Hz	Arm length meters	Stage 1 filter	Stage 2 filter	Stage 3 filter
MFU21HW3F000000	1,5	1500	73	102	40	220/1/50	50	3	metal anti-spark eff. G3	Acrylic corrugated efficiency G4	HEPA H13 ≥99,95% @ MPPS acc. to EN 1822:2009
MFU21HW4F000000	1,5	1500	73	102	40	220/1/50	50	4	metal anti-spark eff. G3	Acrylic corrugated efficiency G4	HEPA H13 ≥99,95% @ MPPS acc. to EN 1822:2009



## Photogallery



## Accessories



### Filtered air outlet connection MFU

KITSCARICESTMFU

Lateral connection diam. 200 mm for hose to discharge filtered air outside from MFU purifiers all.



### Extra filter kit 10kg activated carbon for MFU and WFU

MFU18WECA100000

Extra filter kit 10kg (2x5kg) activated carbon for all WFUs and MFUs 16 -18 - HW



### Extra 17kg activated carbon filter kit for MFU

MFU21WECA170001

Extra 17 kg activated carbon filter module - for all MFU purifiers from 2021 onward. Rechargeable version.



## Spare parts



### Metal Filter Replacement - Stage 1 - MFU-HW

Metal Filter Replacement - Stage 1 - MFU-HW only



### Replacement acrylic filter - Stage 2 - MFU-HW

Replacement acrylic filter - Stage 2 - MFU-HW only

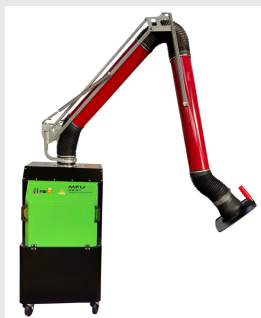


### Replacement filter H13 HEPA - Stage 3 - MFU-HW

Replacement H13 HEPA filter - Stage 3 - MFU-HW only



## Spare parts



### MFU-HW welding fume extractor with red arm

MFU21HWR0000000

Mobile extractors for welding fumes and micro-dust, high performance for professional use, with HEPA H13 99.99% absolute filtration



### MFU-HWF23 welding fume extractor double arm 3m

MFU21HW32F00000

Mobile welding fume extractor with superflex double arm, with filtration efficiency H13 99.99%.

