

WFDM suction wall for marble dust

📌 Sectors **Sanding,**

📌 Applications: **Fix**

📌 Issues **Powders**

COD:

WFDM000000000000



The **WFDM** suction wall with integrated filtration is the ideal solution for the suction and 99 percent filtration of dust generated by manual dry processing on marble, stone or other aggregates. Thanks to its cabinet-like design, it is easy to install and ensures the health of operators by protecting them and the work environment from volatile dust, sucked in frontally through specially designed openings at working height.

Detailed description

The WFDM series is offered in 4 models with widths from 2 to 5 m, all of which are equipped with motorized suction openings that close when the suction is off in order to protect the filter cartridges from direct aggression of inert dust, concentrate the suction flow to the best advantage, and ensure that dust does not escape from the collection drawers during post-cleaning when the ventilation is off.

STRUCTURE

- Sturdy galvanized sheet metal panels machined with numerically controlled punching machine, press-folded with 6-axis computerized bending machine
- Panels gasketed with silicone sealants and bolted together with high-strength bolts
- The wall forms a vacuum cabinet
- Filter cartridges mounted at the back of the wall, made of special Teflon-coated antistatic polyester filter fabric
- Automated compressed air backwash cleaning complete with high efficiency storage tank
- On request with electrical cabinet complying with Industry 4.0

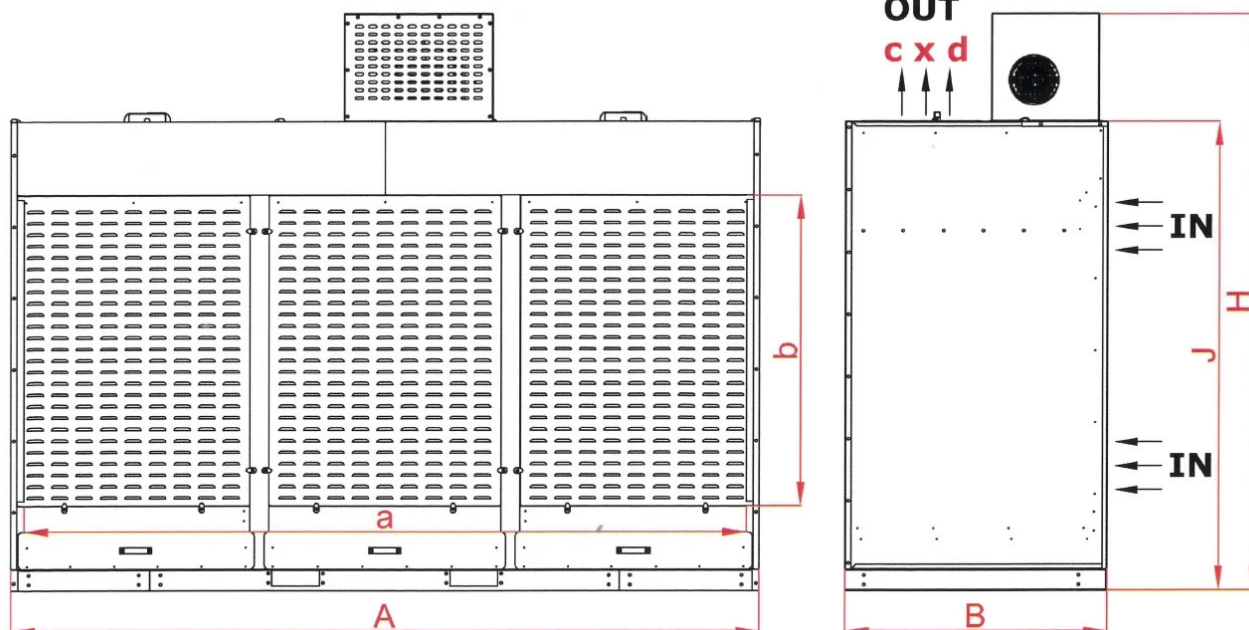
In this version specifically for marble processing, the cabin is equipped with suction openings made at the working height normally used. These openings are made in place of the classical grids so as to control suction and increase the speed of dust capture.

The movable bulkheads from which the dust enters are controlled by pneumatically operated pistons and have 3 functions:

1. Protect the filter cartridges from direct aggression of the inert powder.
2. Concentrate suction flow.



Dimensions



Code	Drawer L	A mm	a mm	B mm	b mm	c mm	d mm	H mm	J mm
WFDM20000000000	180	2250	2190	1100	1300	405	405	2350	1970
WFDM30000000000	270	3150	3090	1100	1300	505	505	2450	1970
WFDM40000000000	360	4050	3990	1100	1300	505	505	2450	1970
WFDM50000000000	450	4950	4890	1100	1300	505	505	2550	1970



Technical Data

Code	Power kW	Nominal flow rate m3 / h	Useful pressure Pa	Filter surface area m2	Filtering efficiency %	Cartridges num.	Drawers num.	Drawers (size) L
WFDM20000000000	4	8000	500	120	99	6	2	180
WFDM30000000000	5,5	12000	500	160	99	8	3	270
WFDM40000000000	7,5	16000	500	240	99	12	4	360
WFDM50000000000	11	20000	500	320	99	16	5	450



Photogallery



Accessories



Galvanized side extensions and roof cabins WFD

WFD0PLT00000000

Pair of side walls and upper roof made of galvanized sheet metal with a standard length of 900mm (other sizes at choice) for WFD paint and powder suction wall booths model.



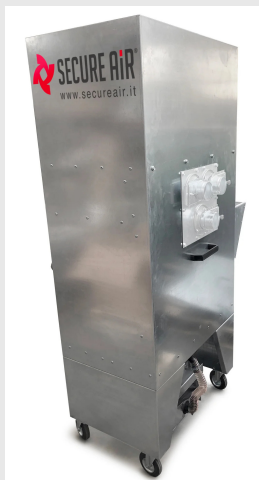
Rectangular silencer on ejector for SBC / SBV

SILRETWFD002030

Rectangular silencer applied on bench air exhaust, available in models 10 / 15 / 20 / 30



Related products



DFC11NBM dust extractor with self-cleaning filters without arm

DFC11NBM00000000

The DFC series wheeled fumes and dust extractor is designed for the extraction and filtration of fumes and micro-dust, even very fine and volatile dust generated during surface treatment processes of metals or composite materials.



WFD suction wall for smoke and dust

WFD0000000000000

WFD smoke and dust suction wall is designed for suction of machining dust on large surfaces, sanding, grinding, discarding, etc.

