

# MFP suction booth with filters and extractor fan

🔧 Sectors **Painting,**

🔧 Applications **Mobile, Fix**

🔧 Issues **VOC fumes**



COD: MFP000000000000

The **mini MFP booth** is a true suction station with a convenient table top, usually used for small painting, gluing, nondestructive testing or other tasks that require a table top and safety ventilation provided by the suction front positioned in front of the operator so as to protect the respiratory tract.

## Insight

The **MFP mini suction booth** is made of sturdy, high-grade galvanized sheet metal, with panels and profiles machined with a numerically controlled punching machine and press-folded with a computerized 6-axis bending machine. All panels are gasketed with silicone sealants and bolted together with high-strength bolts.

The booth forms a suction cabinet on legs with frontally the first suction veil inclined: this solution is designed to optimize suction over the entire frontal working surface.

The standard filter section consists of two stages:

- Sturdy cardboard with offset holes "Andreae Patent" housed in special guides and fixed laterally with screw-on paper retainers that make replacement very easy.
- Flat filters with progressive density glass fiber filter media with 200 g/m<sup>2</sup> grammage and 50 mm thickness.

The **electric vacuum cleaner** consists of three-phase motor and backward-bladed impeller made of laser-cut, press-bent galvanized and welded sheet metal. The impeller is carefully statically and dynamically balanced to be vibration-free, providing longer life to the motor's ball bearings. It is positioned at the top of the cabin is specially designed to provide the flow rate and head necessary to support even a discharge line of about 4-5 mt of ductwork, which from our experience turns out to be a length used in 95% of installations.

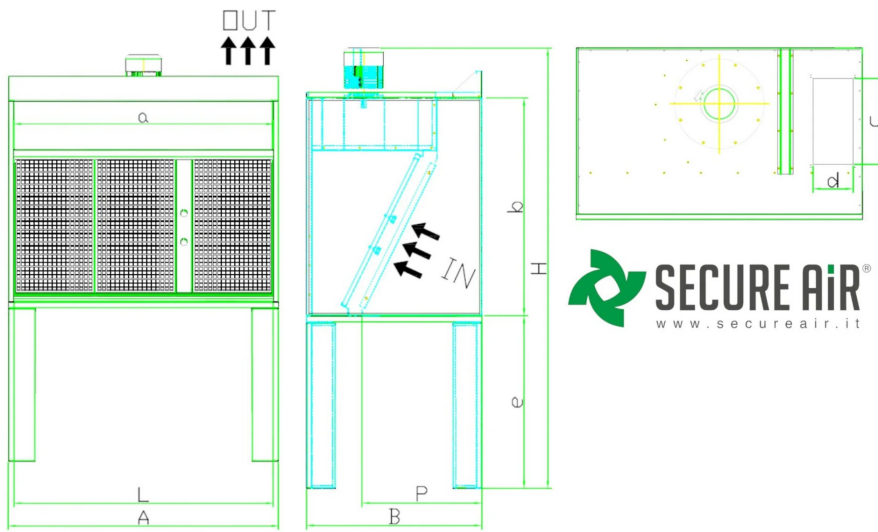
The MFP mini suction booth does not require any special installation, it is ready to use because it is equipped with an **aspirator, integrated filters and on/off switch** already installed on board on the right side (or left on request)

On request, it can be completed with LED lighting, painted or stainless steel structure, turntable for working on workpieces and fittings for air exhaust.

Standard voltage three-phase 400/3/50, single-phase 220/1/50 on request.



## Dimensions



Code	A mm	a mm	B mm	b mm	c mm	d mm	H mm	L mm	P mm
MFP100000000000M	1050	990	900	1115	450	210	2250	990	614
MFP100000000000T	1050	990	900	1115	450	210	2250	990	614
MFP150000000000M	1500	1440	900	1115	450	210	2250	1440	614
MFP150000000000T	1500	1440	900	1115	450	210	2250	1440	614
MFP180000000000M	1800	1740	900	1115	480	250	2250	1740	614
MFP180000000000T	1800	1740	900	1115	480	250	2250	1740	614



## Technical Data

Code	Power kW	Nominal flow rate m <sup>3</sup> / h	Useful pressure Pa	Power supply V	Motor	Pipe diameter mm
MFPI0000000000M	0,75	1800	300	220/1/50	Single-phase	200
MFPI0000000000T	0,75	1800	300	400/3/50	Three-phase	200
MFPI5000000000M	1,1	2600	300	220/1/50	Single-phase	250
MFPI5000000000T	1,1	2600	300	400/3/50	Three-phase	250
MFPI8000000000M	1,1	3600	300	220/1/50	Single-phase	300
MFPI8000000000T	1,1	3600	300	400/3/50	Three-phase	300



### NOTE ON TECHNICAL DATA

220V/1/50Hz power supply on request

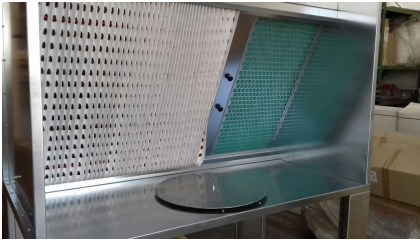
Standard drain provided on the right side

#### Installation

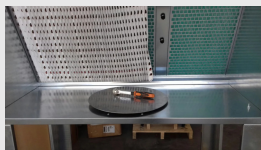
The cabin is shipped packaged on a pallet and assembled. It does not require any special installation skills, only the assembly of the legs and the connection of the filtered air outlet, which can be connected to a circular pipe line. Please refer to our exhaust kits in the accessories section or contact our technical department for more information and advice.



## Photogallery



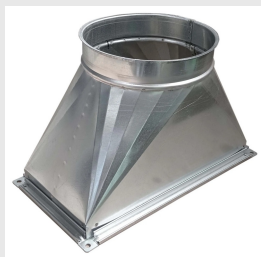
## Related accessories



### Turntable for mini cabin MFP

MFPPIATTO000000

Manual turntable for mini MFP booth.  
Compatible with **all** MFP series mini booths.



### Exhaust pipe connection for mini MFP cabin

MFPRACSCA000000

Exhaust pipe connection fitting for mini cab MFP: supplied with drilled flange and hardware for cab roof mounting.  
Available for mini cab MFP10-15-18



### LED lighting kit for mini MFP booths

MFPKITLED000000

LED lighting kit for mini MFP booths: thanks to the LED bar positioned above the work surface, safe operation is possible.



### Wheel kit for MFP mini cabs

MFPKITRUOTE0000

Turn your mini cab into a mobile workstation with the **brake wheel kit, reinforcements and handles**.  
Compatible with all models.

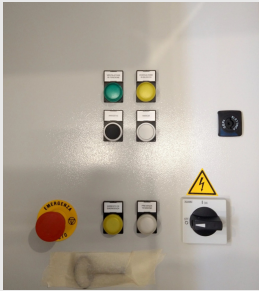


### ATEX pack for mini MFP 10-15-18 booths

MFPKITEX0000000

Extra kit for mini cabins in 400/3/50 three-phase version, allows use with solvents or fluids with potential explosion hazards.





## Electrical panel for paint booths

QED00000000CABV

**Electrical panel** for starting, protection, and management of MFP and WFP series cabin lights with three-phase power supply.



## Related spare parts



### Replacement filter stage 1 mini cab MFP

Pack of stage 1 replacement filters for MFP series mini cabins.



### Replacement filter stage 2 mini cab MFP

Roll with 20 meters of stage 2 flat filter for MFP series mini cabins.

