

MFU-HWF23 welding fume extractor double arm 3m

- 📌 Sectors [Welding,](#)
- 📌 Applications [Mobile](#)
- 📌 Issues [Fumes](#)

COD:

MFU21HW32F00000



MFU-HWF23 mobile welding fume extractor with double superflex arm, with H13 99.99% efficiency filtration.



Insight

The **MFU-HWF23 portable welding fume extractor** is designed to extract and filter fumes and micro-dust generated during metal welding processes.

Thanks to its compact size, wheels, and handles, it can be easily moved close to the work area and then used to extract fumes using the various accessories available.

This version, thanks to its two extraction arms, can serve two welding stations alternately (or work on one or the other) by operating the closing dampers located on the extraction hood.

ADVANTAGES

- Rapid extraction of fumes close to the source thanks to high flow rate
- Mobile: allows you to reach various welding points
- Filtration with absolute filter eff. H13 $\geq 99.95\%$
- 1500W single-phase power can be connected anywhere with a simple Schuko socket
- Compact and easy to handle structure;
- Professional filtration eff. H13 HEPA – 99.99% compliant for air re-release into the environment;
- On-board electrical panel with filter clogging indicator and hour meter as per UNI EN ISO 21904-1:2020 standard;
- Single-phase plug and cable with standard Schuko plug, no electrical installation required, ready to use
- SUPERFLEX double self-supporting suction arm (alternating) with a working radius of 3 m
- High-capacity hood, handle for easy positioning, and damper for adjusting or closing the air flow on each individual arm.

How it works

The welding fume purifier extracts pollutants from the arms, which pass through the system downwards and are purified with 99.9% efficiency through 3 different filtration stages.

At this point, the clean air is returned to the environment through grilles located at the bottom of the sides of the machine.

Safety and regulations

The level of filter clogging is monitored by a control that warns with a light signal when it is necessary to clean or replace the filters, in order to avoid continuing work without air filtration.

3-stage filtration in detail:

- stage 1: G3 effective anti-spark metal filter (ISO 16890 Coarse 70%+)
- stage 2: acrylic filter eff. G4 (ISO 16890 Coarse 70%+)
- stage 3: absolute filter eff. H13 $\geq 99.95\%$ @ MPPS in accordance with EN 1822:2019

Construction

- Sturdy galvanized or painted steel supporting structure depending on the application, equipped with practical handles for moving and 4 swivel wheels with brakes;
- electrical panel with ventilation on/off control, hour meter, and safety indicator for filter clogging;
- single-suction centrifugal fan in a version directly coupled to a single-phase asynchronous motor;





Advantages of buying with operational leasing in 12/24/36 or 48 convenient instalments

- No advance payments to be made, no pro-rata.
- First instalment on average at 30 days.
- Totally deducts rental fees for IRES purposes with no obligations arising from the minimum contract duration provided for by the T.U.
- Totally deducts royalties for IRAP purposes without distinction between capital and interest.
- Basel 2 advantage: thanks to the rental, the asset used is "off-asset" and therefore does not require corresponding assets.
- All-risk insurance included in the fees to cover possible claims.
- Fixed rate for the entire duration of the transaction.

Partner *BCC Lease*

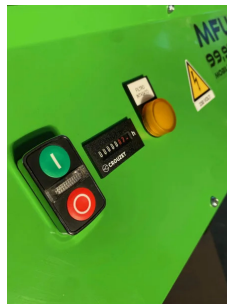
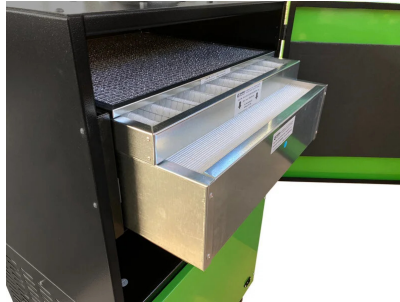


Technical Data

Code	Power kW	Power W	Nominal flow rate m ³ / h	Weight kg	Stage 1 filter	Stage 2 filter	Stage 3 filter
MFU21HW32F00000	1,5 220V/50	1500	1500	120	metal anti-spark eff. G3	acrylic efficiency G4 according to EN 779:2012	Absolute efficiency H13 ≥ 99.95% @ MPPS acc. to EN 1822:2009



Photogallery



Related accessories



17kg activated carbon filter kit for MFU

MFU21WECA170001

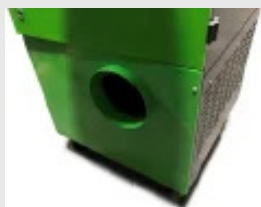
Replacement filter kit for 17 kg activated carbon filter stage - for all MFU purifiers from 2021 onward. Refillable version.



10kg activated carbon filter kit for MFU and WFU

MFU18WECA100000

10kg (2x5kg) activated carbon filter kit for all WFUs and MFUs 16 -18 - HW



MFU filtered air exhaust connection on the outside

KITSCARICESTMFU

Lateral connection diam. 200 mm for hose to discharge filtered air outside from MFU purifiers all.



Related spare parts



Replacement filter kit S1-S2-S3 (no carbon) - for MFU-HW

Replacement filter kit S1-S2-S3 (no carbon) for MFU-HW all



Metal Filter Replacement - Stage 1 - MFU-HW

Metal Filter Replacement - Stage 1 - MFU-HW only



Replacement acrylic filter - Stage 2 - MFU-HW

Replacement acrylic filter - Stage 2 - MFU-HW only



Replacement filter H13 HEPA - Stage 3 - MFU-HW

Replacement H13 HEPA filter - Stage 3 - MFU-HW only



10kg activated carbon filter kit for MFU and WFU

10kg (2x5kg) activated carbon filter kit for all WFUs and MFUs 16 -18 - HW



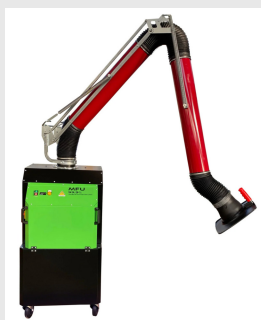
Related Products



MFU-HW welding fume extractor with superflex arm

MFU21HWXF000000

High-performance mobile welding fume extractor for professional use, with HEPA H13 99.99% absolute filtration



MFU-HW welding fume extractor with red arm

MFU21HWR0000000

MFU-HW mobile extractor for welding fumes and micro-dust with red arm, high performance for professional use, with HEPA H13 99.99% absolute filtration

