

Wall-mounted welding fume extractor WFU with rigid arm

📌 Sectors **Welding,**

📌 Applications: **Fix**

📌 Issues **Fumes**

COD:

WFU18BR00000000



Wall-mounted welding fume extractor WFU18 filtration efficiency H13 99.99%.



Detailed description

The WFU18 wall-mounted welding fume extractor is the ideal solution for extracting and filtering fumes and micro-dust generated during metal welding processes.

Due to its compact size, it can be easily installed on the wall or on a column, close to the location that produces welding fumes.

See the blog article for more information.

The welding fume suction arm, provides a working radius of about 3 mt from the installation position of the purifier (also available with mt4 arm)

HOW IT WORKS

The purifier quickly draws in welding fumes from the self-supporting arm, which enter the filter body and are purified to 99.9% efficiency with 3 different stages of filtration.

At this point, the cleaned air is fed back into the environment through grilles located in the sides of the machine.

Environmental safety and certification

As required by European regulations and some Italian regions (e.g., Lombardy), the level of clogging of the filters is monitored by a control that warns with a light signal on the electrical panel when it is necessary to clean or replace the filters of the welding fume purifier, so as to avoid continuing without air filtration.

Technical Data

Nominal flow rate 1,500 mc/h

Motor power 1.5kW 220/1/50

Unit dimensions (Without arm): mm. 640x650x1050 H

Total weight 150 kg approx

STRUCTURE

- Compact structure and easy to install on wall or column (brackets included in kit)
- Filtration with H13 HEPA efficiency - 99.99% compliant for re-entry of air into the room (class W3)
- Electrical panel provided in the kit installable on wall or column with filter clogging signal as per EN 15102;
- Self-supporting suction arm with hood and handle for easy positioning, diameter 160mm, length 3 or 4 m red rigid

Filtration detail

stage 1: metal anti-spark filter eff. G3

stage 2: acrylic filter eff. G4 according to EN 779:2012

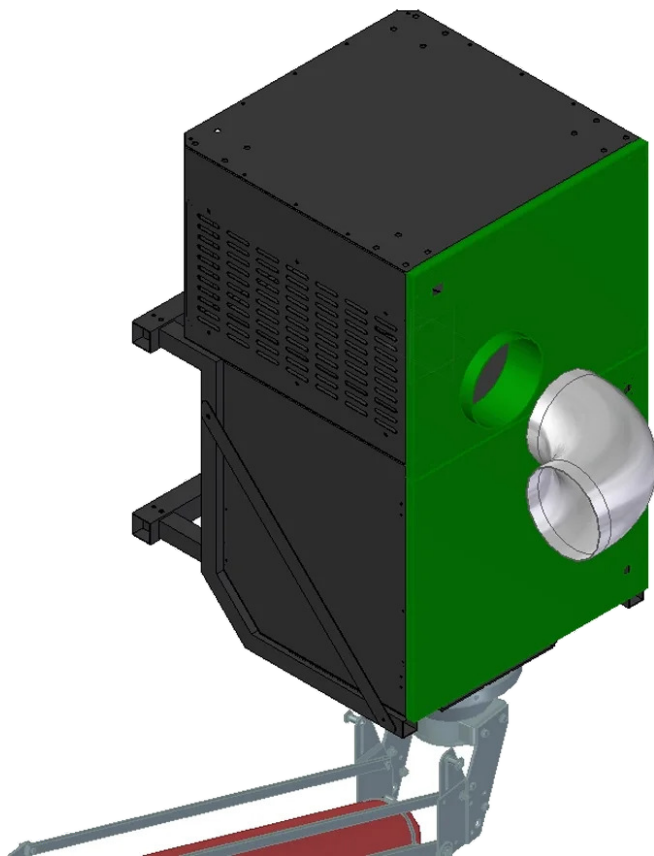
stage 3: absolute filter eff. H13 ≥99.95% @ MPPS in acc to EN 1822:2009

Standard equipment

Brackets for wall or column mounting

CE-compliant electrical panel with ventilation on/off control and filter clogging warning light





Dimensions

Code	Dimensions mm
WFU18BR30000000	640x650x1050 H (without arm)
WFU18BR40000000	640x650x1050 H (without arm)



Dimensions

Code	A mm	B mm	H mm
WFU18BR00000000	640	650	1050

Technical Data

Code	Power kW	Nominal flow rate m ³ / h	Weight kg	Dimensions mm	Arm length meters	Stage 1 filter	Stage 2 filter	Stage 3 filter
WFU18BR30000000	1.5kW 220V/50Hz	1500	150	640x650x1050 H (without arm)	3	metal anti-spark filter eff. G3	acrylic filter eff. G4 in accordance with EN 779:2012	absolute filter eff. H13 ≥99.95% @ MPPS in acc to EN 1822:2009
WFU18BR40000000	1.5kW 220V/50Hz	1500	150	640x650x1050 H (without arm)	4	metal anti-spark filter eff. G3	acrylic filter eff. G4 in accordance with EN 779:2012	absolute filter eff. H13 ≥99.95% @ MPPS in acc to EN 1822:2009

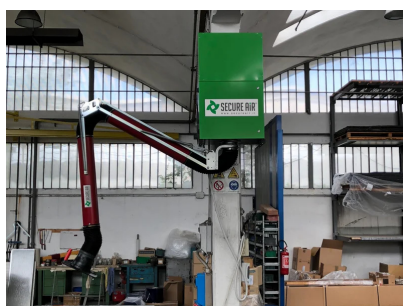
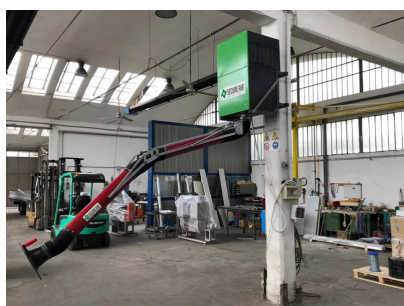


Technical Data

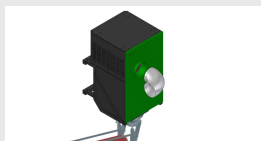
Code	Power kW	Nominal flow rate m ³ / h	Filtering efficiency %	Weight kg	Dimensions mm	Arm diameter mm	Stage 1 filter	Stage 2 filter	Stage 3 filter
WFU18BR00000000	1,5 kW 220V/50	1500	99,99 H13- HEPA	150	640x650x1050 H (without arm)	160	Metal non- sparking filter eff. G3	Acrylic filter eff. G4 according to EN 779:2012	Absolute filter eff. H13 ≥99,95% @MPPS acc. to EN 1822:2009



Photogallery



Accessories



Outdoor air exhaust kit WFU

KITESPESTWFU000

Outdoor air exhaust kit

- Side connection diam. 200mm for flexible hose for exhausting filtered air from WFU and MFU purifiers outside all.
- Thanks to this hose attachment, filtered air from WFU purifiers can be expelled into a rigid hose (not included) so that it is not fed back into the environment.
- Can only be ordered during machine set-up, NOT as a later kit.



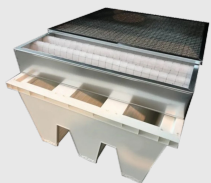
10kg activated carbon filter kit for MFU and WFU

MFU18WECA100000

10kg (2x5kg) activated carbon filter kit for all WFUs and MFUs 16 -18 - HW



Spare parts



Replacement filter kit S1-S2-S3 WFU purifier

Replacement filter kit S1-S2-S3 (no carbon) for WFU hanging purifier

