

SBV suction bench with integrated fan and filters

🔧 Sectors [Welding, Sanding, Powder blowing, Grinding](#)

🔧 Applications: [Fix](#)

🔧 Issues [Fumes, Powders](#)

COD: SBV000000000000



The **SBV suction bench** is designed to protect the operator from fumes and volatile dust emitted by professional processes such as welding, deburring, sanding or grinding of metals in the metalworking industry, foundries and all sectors where surface treatments with dry abrasives are carried out. It is also used for cleaning workpieces or blowing parts with associated dust emission.

In this version the suction bench is ready to use, no fans or external filters or electrical connections are needed because the on/off switch is already fitted with a three-phase plug.

The basic version of the bench, referring to the prices in the table below, is already supplied complete with suction table, on/off circuit breaker wired to the motor and adjustable feet.

Accessories: you can customise the bench according to your production requirements by choosing from the various accessories available at the bottom of the page, or by contacting one of our consultants who will advise you on how to configure the system, for example by adding the side partitions shown in the photo.



Detailed description

The structure of the SBV suction bench is made of strong galvanized press-bent sheet metal sized to withstand mechanical stress and supported weights.

The suction support and work surface is composed of a reinforced structure with side uprights outside the bench to discharge the weight to the floor.

The front suction bulkhead is constructed of punched galvanized sheet metal for fume extraction, and upon request is available in anti-rebound metal mesh to cushion any grinding chips.

The filter section incorporated inside the bench consists of two stages:

- **Flat metal filters for sparks and coarse particles:** frame made of U-shaped galvanized sheet metal profiles, two containment meshes of electro-welded galvanized steel wire and filter media made of layers of metal mesh in aluminum cusped braid.
- **Rigid pocket filters for fine dust,** consisting of a molded polypropylene frame with high mechanical strength within which the filter panels are housed. The filter media is made of fire-retardant and water-repellent glass microfiber paper is pleated and evenly spaced by thermoplastic separators.

The fan is located inside the bench and is specially designed for this type of use, ensuring high performance due to the steel backward-bladed impeller directly coupled to the motor.

As standard, the bench comes with a thermal-magnetic on/off switch.

On the side of the machine body is the rectangular-section hole for filtered air discharge, which is of adequate size to easily connect the exhaust pipe or a silenced bend with upward air discharge.

Larger slag and any accidentally dropped objects remain in the collection drawers on the front of the bench that can be easily opened.

Models available in variant table

SBV with fan and filters eff. 85%

SBX with ATEX components and 95% eff. filters

SBH with fan and HEPA filters

Accessories: you can customize the bench to suit your production needs by choosing from the various accessories available at the bottom of the page, or by contacting one of our consultants who will advise you on how to configure the system, for example, by adding the side bulkheads shown in the photo.

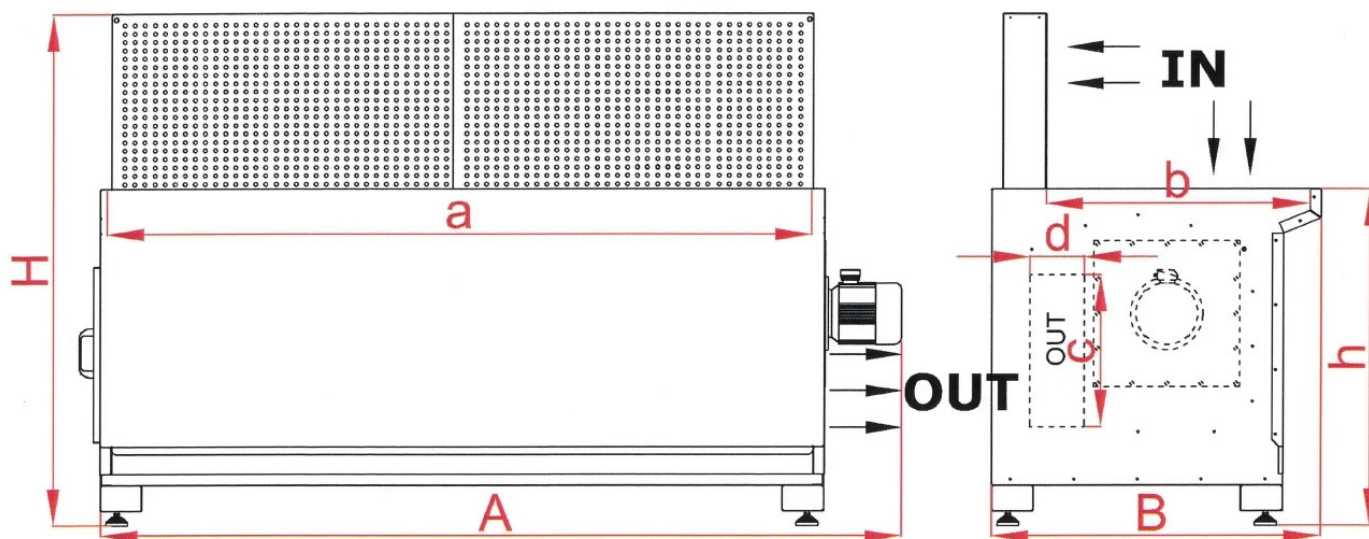
PLUG & PLAY!

The vacuum bench already assembled, complete with vacuum cleaner, new filters, switch, perfectly packaged, with instructions and certifications. Simply connect it to the power supply to start working.

Pictures for illustration purposes, with any accessories to be added when ordering.



Dimensions



Code	A mm	a mm	B mm	b mm	c mm	d mm	H mm	h mm
SBV100000000000	1210	870	900	715	415	200	1400	920/960
SBV150000000000	1710	1370	900	715	415	200	1400	920/960
SBV200000000000	2210	1870	900	715	415	200	1400	920/960
SBV300000000000	3100	2760	900	715	415	200	1400	920/960
SBV10X0000000000	1210	870	900	175	415	200	1400	920/960
SBV15X0000000000	1710	1370	900	715	415	200	1400	920/960
SBV20X0000000000	2210	1870	900	715	415	200	1400	920/960
SBV30X0000000000	3100	2760	900	715	415	200	1400	920/960
SBVH100000000000	1210	870	900	715	415	200	1400	920/960
SBVH150000000000	1710	1370	900	715	415	200	1400	920/960
SBVH200000000000	2210	1870	900	715	415	200	1400	920/960
SBVH300000000000	3100	2760	900	715	415	200	1400	920/960



Technical Data

Code	Maximum load kg / m ²	Power kW	Nominal flow rate m ³ / h	Useful pressure Pa	Noise Db (A)	Filter surface area m ²	Filtering efficiency %	Weight kg
SBV100000000000	150	0,75	2000	600	73	18	> 85%	200
SBV150000000000	150	1,5	2700	600	78	18	> 85%	265
SBV200000000000	150	2,2	3300	600	74	36	> 85%	335
SBV300000000000	150	2,2	4300	600	78	54	> 85%	420
SBV10X0000000000	150	0,75	2000	600	73	18	> 95%	200
SBV15X0000000000	150	1,5	2700	600	78	18	> 95%	265
SBV20X0000000000	150	2,2	3300	600	74	36	> 95%	335
SBV30X0000000000	150	2,2	4300	600	78	54	> 95%	420
SBVH100000000000	150	1,1	2000	600	73	18	> 99,95%	215
SBVH150000000000	150	1,5	2700	600	74	18	> 99,95%	290
SBVH200000000000	150	2,2	3300	600	74	36	> 99,95%	375
SBVH300000000000	150	3	4300	600	78	54	> 99,95%	475



Accessories



Pair of non-suction side bulkheads for SB benches

PLSB000000000000

Pair of non-suction side plates compatible with all SB benches.



Wheel kit for SB screeds

KITRUOTESB000000

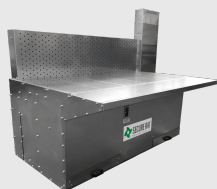
Turn your SBV bench into a mobile workstation with the brake wheel kit.



Digital differential pressure switch in electronic control unit

PRESSDIFF0000000

The **digital differential pressure switch** is ideal for retrofit installation on existing systems with cartridge, bag or pocket filters.



Non-suction front extension for SB benches all

PFNASBT000000000

Non-suction front extension, made of sturdy galvanized steel compatible with all SECUREAIR® suction benches.



Side and top casing for SB benches

CSUSB000000000000

Lateral and upper dust containment box, compatible with all SB series suction benches.



Vertical air outlet channel H1 mt suction desks

KITSCARICAMBSBT

Vertical air exhaust kit consisting of upward flanged side bend and mt 1 rectangular duct with top grille.





Wheel kit for SB benches

KITRUOTESB00000

Transforms the SBV bench into a mobile workstation thanks to the wheel kit with brake.



Round flange for exhaust air adaptation on silent curve

FLTNASCURSB0000

Round flange constructed of high-quality galvanized sheet metal, to be attached to vertical silenced exhaust air outlet for connection to exhaust ducts.

Specify diameter when ordering.

Suitable for suction benches model SBA, SBC, SBV, SBF



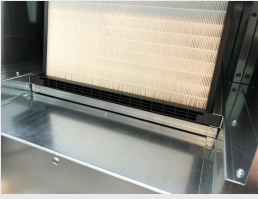
Anti-sparking front wall for SBA-F-V desks

PFASBAFV0000000

Anti-rebound suction front wall for grinding on SBA, SBF and SBV benches.



Spare parts



Replacement filter kit SBV-SBF suction tables

Replacement filter kit for SBV and SBF suction benches.



Related products



SBC suction bench with fan and self-cleaning filters

SBC000000000000

The **SBC suction bench** is available in 4 different sizes ranging from 1 to 3 meters. Designed to suck fumes and dust during professional operations that produce emissions dangerous for operators and the working environment as very volatile. This version is suitable for intensive use thanks to **cartridge filters with compressed air cleaning**, which ensure the restoration of maximum filtration efficiency at the end of the cycle and a long life in times.



SBA suction bench for centralised systems

SBA000000000000

The **SBA suction bench** is the ideal solution for vacuuming up fumes and dust and **working safely** when welding, deburring, sanding or grinding metals. In fact, the practical and sturdy suction bench top ensures **widespread suction on the work surface** and frontally, protecting the operator's respiratory tract.



SBF suction bench with integrated filters

SBF000000000000

The **SBF suction bench** is to be used to suck in fumes and dust during welding, deburring, sanding or grinding operations on metals and in all areas where surface treatments with dry abrasives are carried out.

