

MFUHCO fume extractor

🔧 Sectors [Laboratories and Medical, Welding,](#)

🔧 Applications [Mobile, Fix](#)

🔧 Issues [Odours, VOC fumes](#)



COD:

MFU21HCO0000000

MFUHCO high-performance mobile fume and exhaust extractor on wheels for professional use, with suction arm, HEPA H13 99.99% absolute filtration, and activated carbon filters.

Insight

The MFU series fume extractors represent the cutting edge of technology for drastically reducing the risks posed by fumes and micro-dust in professional work environments. Pollutants are quickly extracted at the source by the high-capacity hood arm and then filtered to 99.99% efficiency thanks to HEPA technology, which guarantees the removal of micro-dust particles from 0.3 µm upwards.

The HCO version has been specifically designed for localized extraction on casting and annealing furnaces in goldsmith's workshops, but in general it can be used whenever it is necessary **to eliminate fumes, micro-dust, and odors.**

The MFU welding fume extractor is classified as W3 compliant for the filtration of carcinogens as required by UNI EN ISO 21904-1:2020.

Features

- Compact and easy to handle structure;
- Self-supporting suction arm in red, 2 m/3 m, or black Superflex, 3 m;
- Air recirculation in the environment with absolute H13 HEPA filtration - 99.99%
- Odor filtration with activated carbon (KG 17)
- W3 classified compliant for the filtration of carcinogens;
- On-board electrical panel with indicator light to signal filter clogging
- Hour meter for keeping the machine maintenance log;
- Single-phase plug and cable with Schuko socket requires no electrical installation, ready to use;

Construction

- Sturdy galvanized or painted steel supporting structure depending on the application, equipped with practical handles for moving
- 4 swivel wheels with brakes;
- electrical panel with on/off ventilation control, hour meter, and safety indicator for filter clogging;
- single-suction centrifugal fan in a version directly coupled to a single-phase asynchronous motor;

4-stage filtration in detail:

-stage 1: G3 effective anti-spark metal filter (ISO 16890 Coarse 70%+)

-stage 2: acrylic filter eff. G4 (ISO 16890 Coarse 70%+)

-stage 3: absolute filter eff. H13 ≥99.95% @ MPPS in accordance with EN 1822:2019

- stage 4: 17 kg activated carbon filter



Technical Data

Code	Power kW	Nominal flow rate m ³ / h	Filter effect %	Weight kg	Long arm meters	Motor	Activated carbon kg	Stage 1 filter	Stage 2 filter	Stage 3 filter	Stage 4 filter
MFU21HCO2BR0000	1.5 220/1/50Hz	1500	99.99 H13- HEPA	110	2	1.5 kW 220/1/50	17	metal anti- spark eff. G3	Corrugated acrylic efficiency G4	HEPA H13 ≥99,95% @ MPPS acc. to EN 1822:2009	17 kg activated carbon
MFU21HCO3BR0000	1.5 220/1/50Hz	1500	99.99 H13- HEPA	110	3	1.5 kW 220/1/50	17	metal anti- spark eff. G3	Corrugated acrylic efficiency G4	HEPA H13 ≥99,95% @ MPPS acc. to EN 1822:2009	17 kg activated carbon
MFU21HCO3BF0000	1.5 220/1/50Hz	1500	99.99 H13- HEPA	110	3	1.5 kW 220/1/50	17	metal anti- spark eff. G3	Corrugated acrylic efficiency G4	HEPA H13 ≥99,95% @ MPPS acc. to EN 1822:2009	17 kg activated carbon

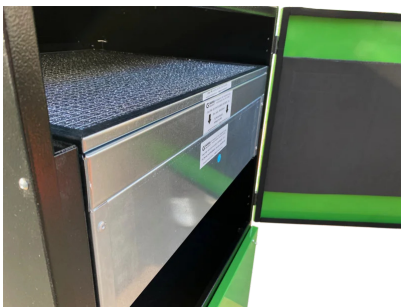
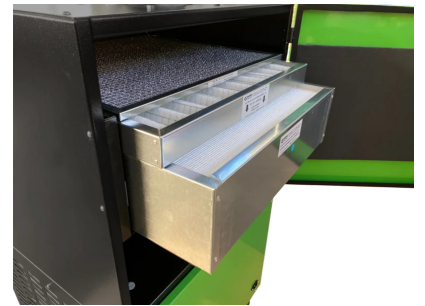


Technical Data

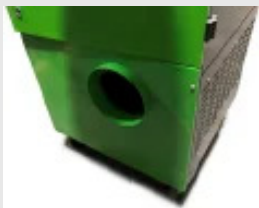
Code	Power kW	Nominal flow rate m ³ / h	Filter effect %	Weight kg	Long arm meters	Motor	Activated carbon kg	Stage 1 filter	Stage 2 filter	Stage 3 filter	Stage 4 filter
MFU21HCO0000000	1.5 220/1/50Hz	1500	99.99 H13- HEPA	110	2	1.5kW 220/1/50Hz	17	metal anti-spark eff. G3	Corrugated acrylic efficiency G4	HEPA H13 ≥99.99% @ MPPS acc. to EN 1822:2009	17 kg activated carbon



Photogallery



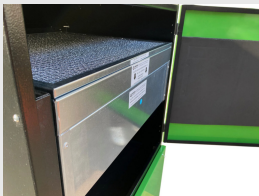
Related accessories



MFU filtered air exhaust connection on the outside

KITSCARICESTMFU

Lateral connection diam. 200 mm for hose to discharge filtered air outside from MFU purifiers all.



17kg activated carbon filter kit for MFU

MFU21WECA170001

Replacement filter kit for 17 kg activated carbon filter stage - for all MFU purifiers from 2021 onward. Refillable version.



Related spare parts



Replacement filter kit S1-S2-S3 (no carbon) - for MFU-HW

Replacement filter kit S1-S2-S3 (no carbon) for MFU-HW all



Metal Filter Replacement - Stage 1 - MFU-HW

Metal Filter Replacement - Stage 1 - MFU-HW only



Replacement acrylic filter - Stage 2 - MFU-HW

Replacement acrylic filter - Stage 2 - MFU-HW only



Replacement filter H13 HEPA - Stage 3 - MFU-HW

Replacement H13 HEPA filter - Stage 3 - MFU-HW only



Replacement filter carbon filter MFU-HC

Replacement filter 17 kg activated carbon filter in refillable version - MFU-HC / HCO only



Related Products



MFV193R mobile activated carbon extractor

MFV1913R0000000

The **MFV19** series mobile activated carbon vacuum cleaner is the ideal solution for suction and filtration of VOC / VOC fumes generated by paint touch-ups or other professional operations such as gluing, resin-coating or manual solvent cleaning, so as to limit their spread, in compliance with environmental and occupational safety regulations.

