

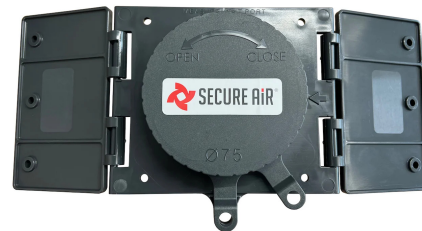
Universal flue gas inlet for atmospheric exhaust chimneys

📌 Sectors

📌 Applications: [Fix](#)

📌 Issues [Fumes](#)

COD: PFU3000000000000



Universal flue gas inlet for making standardized sampling points on atmospheric emission chimneys.

Detailed description

Universal flue gas inlet designed and manufactured in accordance with UNI EN 15259:2008 (Air quality - Measurement of emissions from stationary sources - Requirements for measurement sections and sites and the measurement objective, plan and report).

Compared with classic metal couplings, it fits all types of piping, circular with diameters of 150 mm and above and rectangular, i.e., on flat surfaces.

The 3-inch PFU coupling does not require special modifications or adapters depending on the surface on which it is installed, resulting in significant time savings on the construction site.

ADVANTAGES:

- Ready to use
- Versatile for application to any chimney section with diameter \geq to 150 [mm] up to rectangular chimneys
- Zero oxidation of the workpiece surface
- Reduced weight compared to conventional
- Synthetic compound does not compromise the aesthetics of the piece

The PFU3 atmospheric emission chimney flue inlet consists of a central body with a quick-screw cap and tilting side fins designed to facilitate its attachment to circular pipes of different diameters.

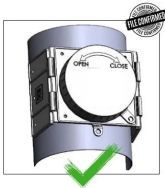
Specifically, the two side fins allow it to be installed on all pipes with circular cross-sections from diameter 150 [mm] and above up to rectangular cross-sections, thus flat surfaces.

Equipped with a coupling on the central body and a double coupling on the cap allows the addition of two connections (at the user's discretion), one fixed to secure the cap to the body and one removable to ensure its accidental opening.

More information and regulations.

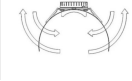


Attacco Tradizionale

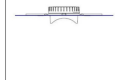


POSSIBILI CONFIGURAZIONI:

Configurazione su tubazioni cilindriche con diametri maggiori e uguali a 150 (mm).



Configurazione su tubazioni rettangolari (superficie piana):



ENVIRONMENTAL SUSTAINABILITY:

The product is made entirely of polyamide 6 polymer commercial name PROMYDE B30P and is therefore not hazardous to the environment, the material is easily recoverable and in the event that its recovery is not possible it must be disposed of by relying on the local legislation in force.



Dimensions

Code	B mm	h mm	L mm	INTERNAL x EXTERNAL DIAMETERS
PFU3000000000001	120	52.5	290	75mm (for probe insertion) x 86mm (for probe insertion)
PFU3000000000010	120	52.5	290	75mm (for probe insertion) x 86mm (for probe insertion)

Technical Data

Code	Diameter mm	Weight kg	Operating temperature °C	Electrode material	Arm fixing
PFU3000000000001	150	0.206	from -20 to 110	Nylon and UV-resistant compound	By riveting 4 mm diameter
PFU3000000000010	150	0.206	from -20 to 110	Nylon and UV-resistant compound	By riveting 4 mm diameter



Photogallery

