

WFU wall-mounted welding fume extractor with filters and arm

🔗 Sectors [Welding,](#)

🔗 Applications [Fix](#)

🔗 Issues [Fumes](#)

COD: WFU18BF00000000



WFU wall-mounted welding fume extractor with extractor fan, self-supporting arm, and H13 99.99% efficiency filtration.



Insight

The WFU wall-mounted welding fume extractor is the ideal solution for extracting and filtering fumes and micro-dust generated during metal welding processes.

Thanks to its compact size, it can be easily installed on a wall or column, close to the workstation producing welding fumes.

See the blog article for more information.

The welding fume extraction arm guarantees a working range of approximately 3 meters from the purifier's installation position (also available with a 4-meter arm).

HOW IT WORKS

The purifier quickly extracts welding fumes from the self-supporting arm, which enter the filter body and are purified with 99.9% efficiency through 3 different filtration stages.

At this point, the clean air is returned to the environment through grilles located on the sides of the machine.

Environmental safety and certification

As required by European regulations and those of certain Italian regions (e.g., Lombardy), the level of filter clogging is monitored by a control that alerts the operator with a light signal on the electrical panel when the welding fume purifier filters need to be cleaned or replaced, in order to avoid continuing without air filtration.

Technical data

Nominal flow rate 1,500 m³/h

Motor power 1.5 kW 220/1/50

Unit dimensions (without arm): 640x650x1050 H mm

Total weight approx. 150 kg

STRUCTURE

- Compact structure, easy to install on a wall or column (brackets included in the kit)
- H13 HEPA filtration efficiency - 99.99% compliant for air re-introduction into the environment (class W3)
- Electrical panel supplied in the kit, installable on wall or column, with filter clogging indicator as per EN 15102 standards
- Self-supporting suction arm with hood and handle for easy positioning, diameter 160 mm, length 3 or 4 m
- Choice of black arm with flex tube (BF version) or aluminum tubes with external structure (code BR)

Filtration details

-stage 1: G3 effective anti-spark metal filter (ISO 16890 Coarse 70%+)

-stage 2: acrylic filter eff. G4 (ISO 16890 Coarse 70%+)

-stage 3: absolute filter eff. H13 ≥99.95% @ MPPS in accordance with EN 1822:2019

Standard equipment

-Brackets for wall or column mounting

-CE-compliant electrical panel with ventilation on/off control and safety indicator light for filter clogging.



Dimensions

Code	Dimensions mm
WFU18BF30000000	640x650x1050 H (without arm)
WFU18BR3A000000	640x650x1050 H (without arm)
WFU18BF40000000	640x650x1050 H (without arm)
WFU18BR4A000000	640x650x1050 H (without arm)



Dimensions

Code	A mm	B mm	H mm
WFU18BF00000000	640	650	1050

Technical Data

Code	Power kW	Nominal flow rate m ³ / h	Weight kg	Dimensions mm	Long arm meters	Stage 1 filter	Stage 2 filter	Stage 3 filter
WFU18BF30000000	1.5kW 220V/50Hz	1500	150	640x650x1050 H (without arm)	3	metal anti-spark filter eff. G3	acrylic filter eff. G4 in accordance with EN 779:2012	absolute filter eff. H13 ≥99.95% @ MPPS in acc to EN 1822:2009
WFU18BR3A000000	1.5kW 220V/50Hz	1500	150	640x650x1050 H (without arm)	3	metal anti-spark filter eff. G3	acrylic filter eff. G4 in accordance with EN 779:2012	absolute filter eff. H13 ≥99.95% @ MPPS in acc to EN 1822:2009
WFU18BF40000000	1.5kW 220V/50Hz	1500	150	640x650x1050 H (without arm)	4	metal anti-spark filter eff. G3	acrylic filter eff. G4 in accordance with EN 779:2012	absolute filter eff. H13 ≥99.95% @ MPPS in acc to EN 1822:2009
WFU18BR4A000000	1.5kW 220V/50Hz	1500	150	640x650x1050 H (without arm)	4	metal anti-spark filter eff. G3	acrylic filter eff. G4 in accordance with EN 779:2012	absolute filter eff. H13 ≥99.95% @ MPPS in acc to EN 1822:2009

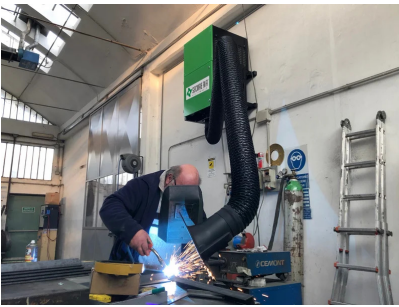


Technical Data

Code	Power kW	Nominal flow rate m ³ / h	Filter effect %	Weight kg	Dimensions mm	eff CEN EN 779	Arm diameter mm	Stage 1 filter	Stage 2 filter	Stage 3 filter
WFU18BF00000000	1.5 kW 220/1/50	1500	99.99 H13- HEPA	150	640x650x1050 H (without arm)	W3	160	Metal non-sparking filter eff. G3	Acrylic filter eff. G4 according to EN 779:2012	Absolute filter eff. H13 ≥99.95% @MPPS acc. to EN 1822:2009



Photogallery



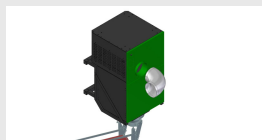
Related accessories



10kg activated carbon filter kit for MFU and WFU

MFU18WECA100000

10kg (2x5kg) activated carbon filter kit for all WFUs and MFUs 16 -18 - HW



Outdoor air exhaust kit WFU

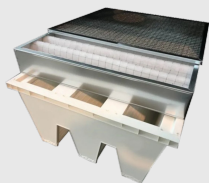
KITESPESTWFU000

Outdoor air exhaust kit

- Side connection diam. 200mm for flexible hose for exhausting filtered air from WFU and MFU purifiers outside all.
- Thanks to this hose attachment, filtered air from WFU purifiers can be expelled into a rigid hose (not included) so that it is not fed back into the environment.
- Can only be ordered during machine set-up, NOT as a later kit.



Related spare parts



S1-S2-S3 replacement filter kit for WFU-MFU16-18 purifiers

Replacement filter kit S1-S2-S3 (no carbon) for WFU hanging purifier

