

WFDM suction wall for marble, stone, or aggregate dust

🔗 Sectors [Sanding](#),

🔗 Applications [Fix](#)

🔗 Issues [Powders](#)



COD:

WFDM000000000000

The **WFDM** suction wall with integrated filtration is the ideal solution for the suction and 99 percent filtration of dust generated by manual dry processing on marble, stone or other aggregates. Thanks to its cabinet-like design, it is easy to install and ensures the health of operators by protecting them and the work environment from volatile dust, sucked in frontally through specially designed openings at working height.

Insight

The WFDM series is available in 4 models with widths ranging from 2 to 5 meters, all equipped with motorized suction openings that close when the suction is turned off, in order to protect the filter cartridges from direct contact with inert dust, concentrate the suction flow as effectively as possible, and ensure that dust does not escape from the collection drawers during post-cleaning with the ventilation turned off.

STRUCTURE

- Panels in sturdy galvanized sheet metal machined with a numerically controlled punching machine, press-folded with a computerized 6-axis folding machine
- Panels sealed with silicone sealants and bolted together with high-strength bolts
- The wall forms a suction cabinet
- Filter cartridges mounted on the rear of the wall, made of special Teflon-coated antistatic polyester filter fabric
- Automatic cleaning with automated compressed air backwashing, complete with high-efficiency storage tank
- On-board electrical panel (with inverter or Industry 4.0 compliant on request)

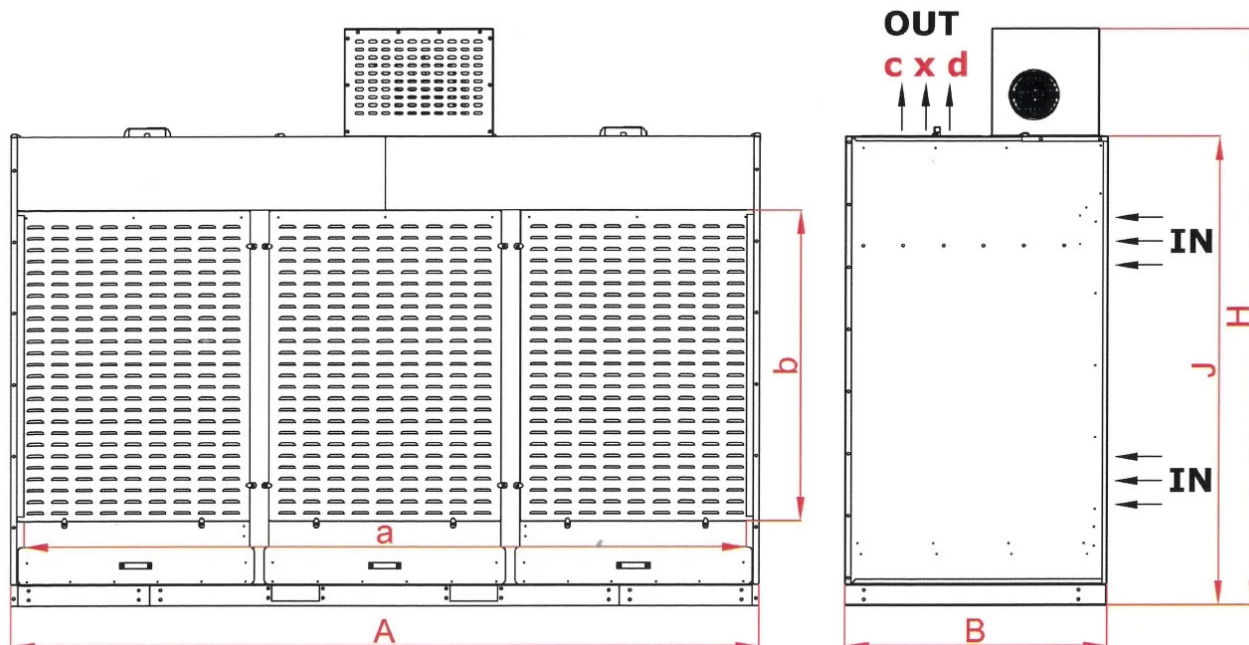
In this version specifically designed for marble processing, the cabin is equipped with suction openings at the normal working height. These openings are made in place of the classic grilles in order to control suction and increase the speed of dust collection.

The movable partitions through which the dust enters are controlled by pneumatically operated pistons and have three functions:

1. Protecting the filter cartridges from direct contact with inert dust.
2. Concentrating the suction flow.



Dimensions



Code	Drawer L	A mm	a mm	B mm	b mm	c mm	d mm	H mm	J mm
WFDM20000000000	180	2250	2190	1100	1300	405	405	2350	1970
WFDM30000000000	270	3150	3090	1100	1300	505	505	2450	1970
WFDM40000000000	360	4050	3990	1100	1300	505	505	2450	1970
WFDM50000000000	450	4950	4890	1100	1300	505	505	2550	1970



Technical Data

Code	Power kW	Nominal flow rate m ³ / h	Useful pressure Pa	Sup filter m ²	Filter effect %	Cartridges num.	Drawers num.	Drawers (size) L
WFDM20000000000	4	8000	500	120	99	6	2	180
WFDM30000000000	5,5	12000	500	160	99	8	3	270
WFDM40000000000	7,5	16000	500	240	99	12	4	360
WFDM50000000000	11	20000	500	320	99	16	5	450



Photogallery



Related accessories



Galvanized side extensions and roof cabins WFD

WFD0PLT00000000

Pair of side walls and upper roof made of galvanized sheet metal with a standard length of 900mm (other sizes at choice) for paint and powder suction wall booths model WFD.



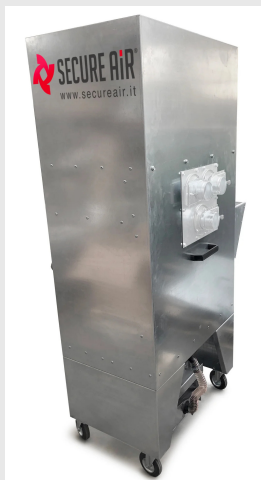
Rectangular silencer on ejection for WFD 20-30

SILRETWFD002030

Rectangular silencer applied to the air outlet of the suction wall, only for models 20-30



Related Products



DFC11NBM dust and fume extractor

DFC11NBM0000000

The DFC11 mobile dust and fume extractor with self-cleaning filters is the ideal solution for extracting and filtering fumes and micro-dust generated during surface treatment processes on metals or composite materials.



WFD suction wall for smoke and dust

WFD0000000000000

WFD smoke and dust suction wall is designed for suction of machining dust on large surfaces, sanding, grinding, discarding, etc.

