

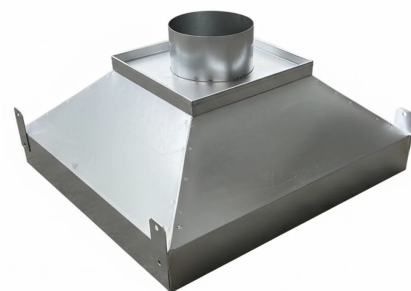
Rectangular galvanised hood CAPRETZ

🔗 Sectors [Plant Components](#),

🔗 Applications [Fix](#)

🔗 Issues [Odours](#)

COD: CAPRETZ00000000



With regard to exhaust systems, fume **hoods** are the simplest system for the proper capture of fumes and vapors, which tend to rise upward due to the higher than ambient temperature.

Insight

The hoods in this version do not have an extractor fan and are for industrial use only (**not for kitchens**).

Available in various standard sizes, they can also be made to measure.

Contact our technical department.

Construction

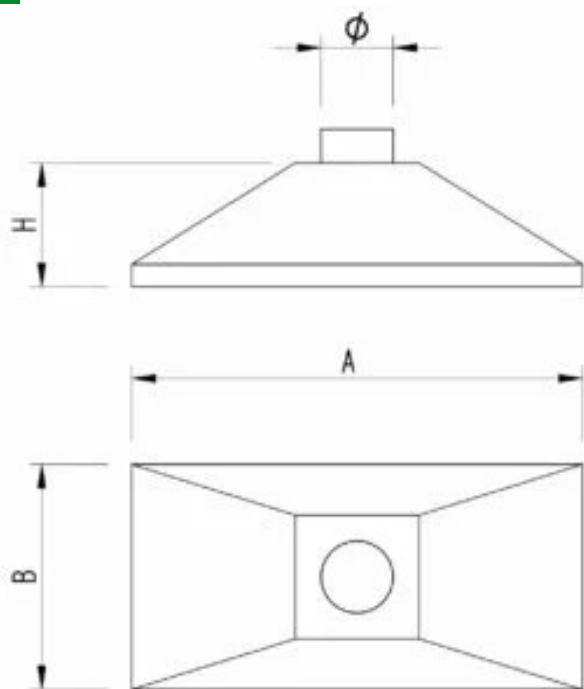
Galvanized sheet metal stapled in accordance with UNI EN 10346, tapered at the top, bottom edge folded inward to prevent cuts.

This version does not include an extractor fan and is for industrial use only (not for kitchens).

PVC perimeter strips are available on request for better containment of pollutants.



Dimensions



Code	A mm	B mm	H mm	Dimensions mm	Ø mm
CAPRETZ60060000	600	600	250	300x300	160
CAPRETZ80050000	800	500	250	300x300	160
CAPRETZ90060000	900	600	350	300x300	160
CAPRETI0007000	1000	700	350	400x350	200
CAPRETI0009000	1000	900	350	400x350	200
CAPRETI2006000	1200	600	450	400x350	200
CAPRETI2009000	1200	900	450	500x450	200
CAPRETI5001000	1500	1000	450	600x500	250
CAPRETI20001000	2000	1000	550	1000x500	250



Photogallery

