

# HVLS industrial 5-blade ceiling fan APBG5S

COD:

SWHS000000000000



## HVLS Industrial 5-Blade Ceiling Fan APBG5S

- 5 Blades Extruded Aluminum Shaped Profile
- Narrow Cone Air Distribution
- Three-phase Brushless EC motor equipped with Integrated Electronic System and EMC filters 3
- Sizes with Diameters 4m / 5m / 6m
- Air Flow Rates up to 529,464 m<sup>3</sup>/h (AMCA230-99)
- 120 RPM Max
- Pot. Max Ass. 1.4 kW
- Suitable for continuous duty S1



## Insight

HVLS stands for **HIGH FLOW LOW RPM** in Italian

These are large-scale industrial ceiling fans whose unique technical features can greatly improve summer comfort and winter energy savings. They can move huge air flow rates (up to 540,000 cu m/h) and do so at low RPM (maximum 110 RPM) . They represent an excellent alternative to coolers because they do not affect the ambient humidity level, while still creating a pleasant feeling in operators.

**The APBG5S series** is available in 3 sizes from 4,000mm to 6,000mm with air flow rates up to 430,000m<sup>3</sup>/h.

**The complete fan is equipped with corresponding Blade Kit + Motor Kit.**

### CONSTRUCTION

Upper structure to protect the motor made of welded and painted steel.

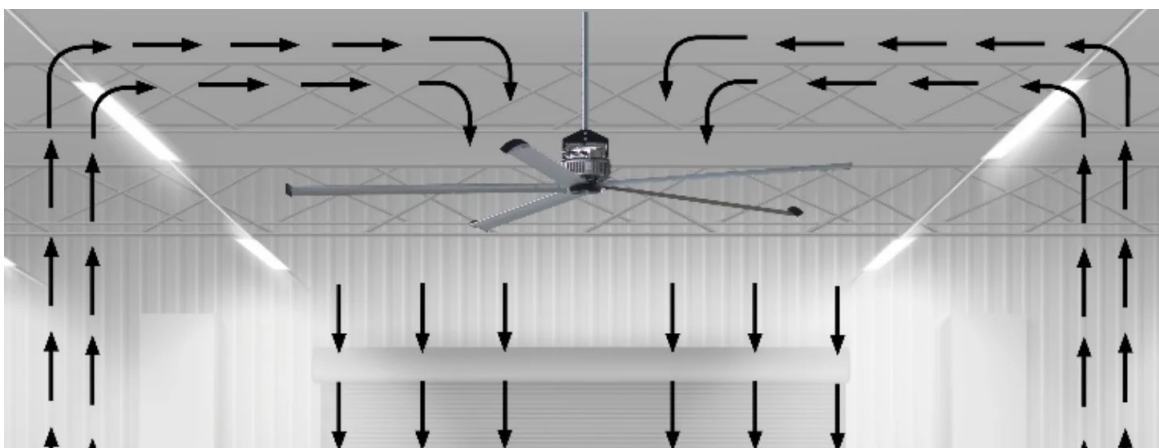
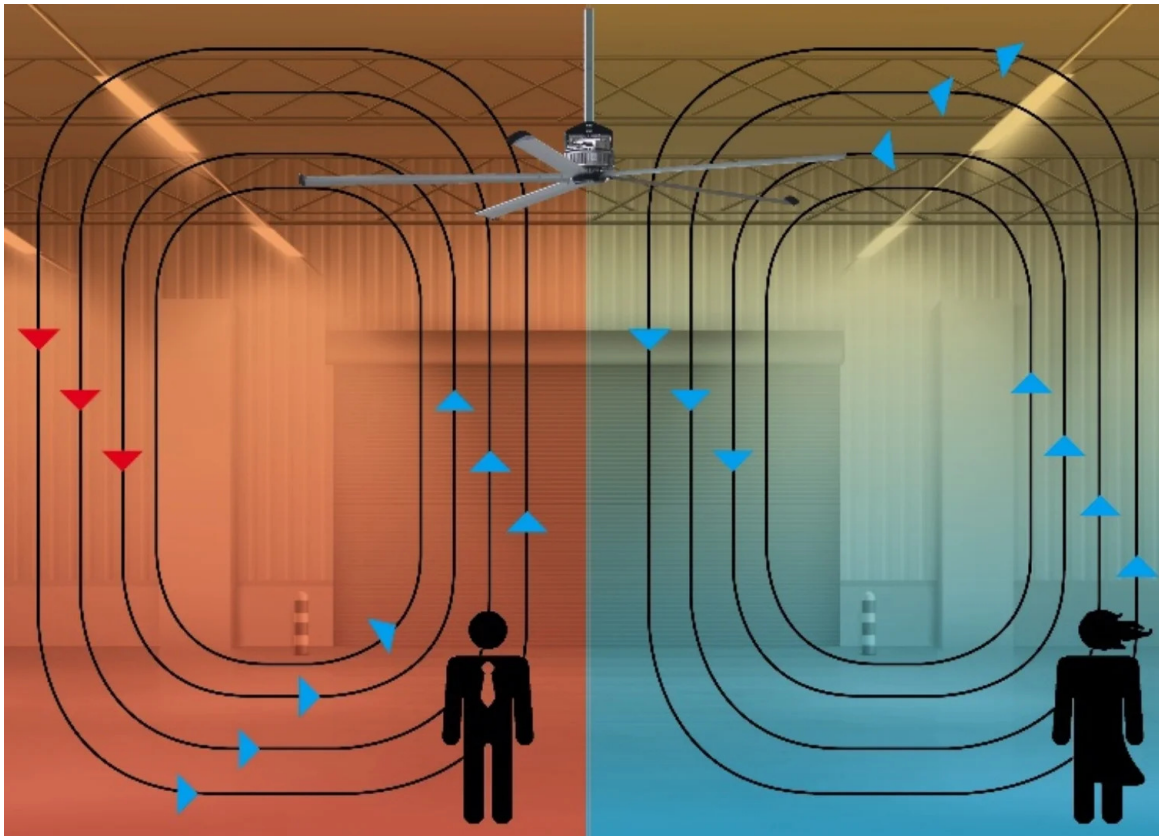
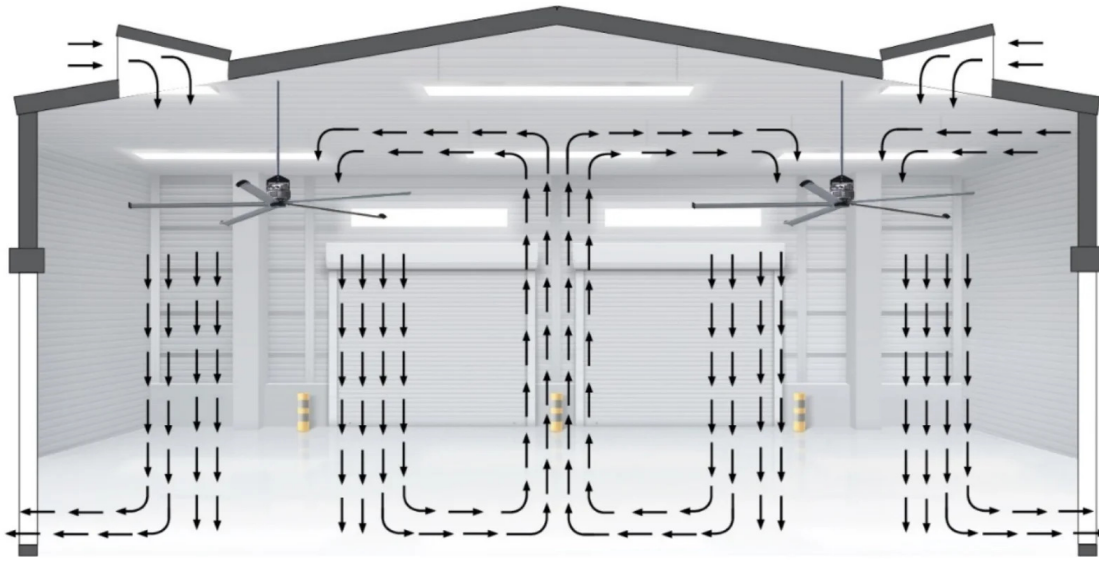
The fan is equipped with:

- Safety cable set and tubular L = 800mm supplied.
- Blades made of aluminum EN AW 6063 T6.
- Aerodynamic blade terminals made of black plastic.
- Hub fitted with safety ring.
- Aesthetic hub cover made of black plastic.

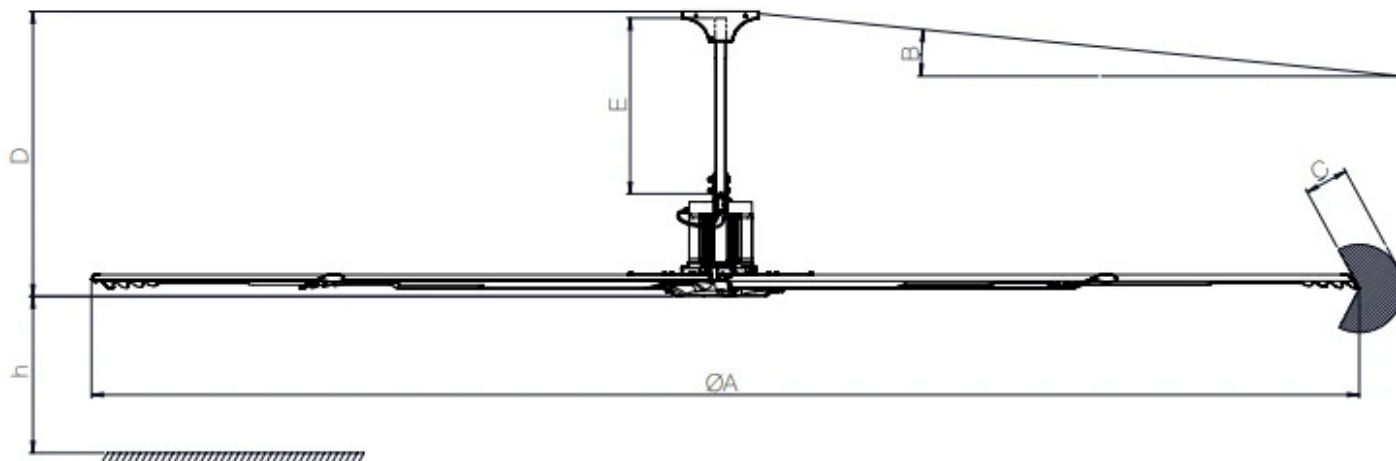
### FEATURES AND BENEFITS

- Narrow air distribution cone under the fan
- Absence of gears and aerodynamic design to ensure absolute quietness.
- Optimization of HVAC systems and reduction of CO<sub>2</sub> emissions, consumption and energy costs.
- Winter comfort achieved by bringing down the heat that stratifies at the top of the rooms, equalizing the temperature and avoiding further heating.
- Summer comfort achieved by keeping the air moving continuously, eliminating annoying hot-cold zones and creating a gentle breeze that promotes natural transpiration and drives away annoying insects.
- No routine maintenance required.
- Steel structure to ensure long life, strength and sturdiness.
- Several systems provided to ensure maximum safety (reinforced main safety cable, additional stabilization cables, hub safety ring).
- Aerodynamic blade terminals to optimize performance and acoustic comfort.
- Hub cover to protect against dust and for better design
- Simplified electrical connections.
- Integrated EMC filters to prevent possible electromagnetic interference with other devices.
- They operate at temperatures from 0°C to +50°C.
- Units are tested in accordance with the latest AMCA standards to ensure maximum reliability of performance data.
- Designed and manufactured according to the Machinery Directive (MD), Low Voltage Directive (LVD) and Electromagnetic Compatibility Directive (EMC).





## Dimensions



Code	A mm	B mm	C mm	D mm	E mm	h mm
SWHS40000000000	4000	20	450	1300	800	2700
SWHS50000000000	5000	20	550	1300	800	2700
SWHS60000000000	6000	20	650	1300	800	2700

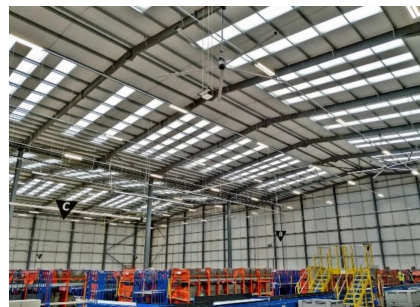
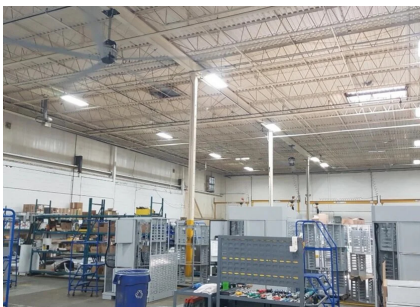
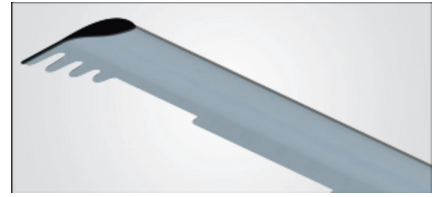
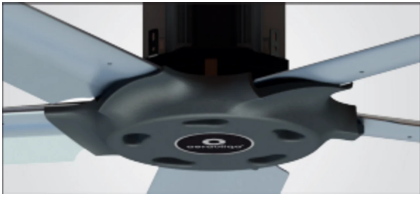


## Technical Data

Code	Power kW	Nominal flow rate m <sup>3</sup> / h	Weight kg	Power supply Hz	Motor	RPM rpm
SWHS40000000000	0,8	271717	105	50/60	Three-phase	120
SWHS50000000000	1,1	365986	127	50/60	Three-phase	105
SWHS60000000000	1.4	429464	143	50/60	Three-phase	84



## Photogallery



## Related accessories



### 3.5" touch control panel with color graphic display

PNLNCTR35000000

3.5" touch control panel with color graphic display that can control up to 4 units.



### Potentiometer equipped with a bipolar ON/OFF switch

POTINTBIP000000

Remote potentiometer with front knob for manual adjustment of fan speed provided with two-pole switch (ON/OFF) and yellow front LED.



### Control panel with anemometer and probe for temperature measurement

PNCANEMSND00000

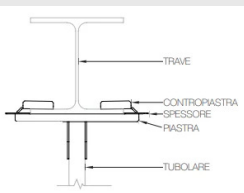
Controller to control ventilation units according to the degree of temperature and wind speed.



### Control panel with temperature probe included and humidity probe on request

PNCSNDUMID00000

Controller to control ventilation units according to temperature degree and THI level.

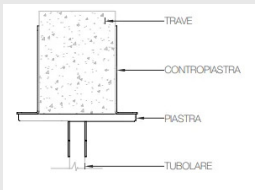


### IPE/HEA/HEB beam fastening kit

KITIFEHEAHEB000

Fastening kit for SMHS fans in HVLS version compatible with most popular IPE, HEA, HEB steel profiles.





## Fixing kit for rectangular section beams

KITRETTANGOL000

Fixing kit for SMHS fans in HVLS version compatible with rectangular section beams with base between 100mm and 260mm.



## Related Products



### Industrial 3-blade ceiling fan HVLS3

SLHS000000000000

HVLS 3-Blade Industrial Ceiling Fans.

- 3 Blades Extruded in Anodized Aluminum against Corrosion with Constant Cross Section
- Precabled 3-phase Brushless EC motor equipped with Integrated Electronic System and EMC3 filters
- Sizes with Diameters 2.4m / 3m / 3.6m
- Air Flow Rates up to 134,271 m<sup>3</sup>/h (AMCA230-99)200
- Max RPM
- Pot. Max Ass. 0.7 kW
- Suitable for continuous duty S1.



### HVLS industrial 5-blade ceiling fan APBG5

SMHS000000000000

APBG5 5-Blade Industrial Ceiling Fan

- 5 Blades Extruded Aluminum Anodized Against Corrosion Constant Section
- Increased Air Distribution Cone
- Three-phase Brushless EC motor equipped with Integrated Electronic System and EMC filters
- 3 Sizes with Diameters 3.6m / 5.4m / 7.3m
- Air Flow Rates up to 438,818 m<sup>3</sup>/h (AMCA230-99)
- 110 RPM Max
- Pot. Max Ass. 0.75 kW

