

# Pair of fittings for centrifugal fans SVM-R-F

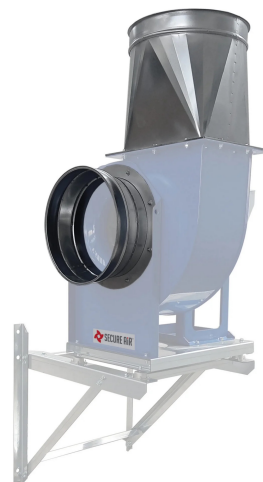
🔗 Sectors

🔗 Applications [Fix](#)

🔗 Issues [Odours, Exhaust gases, Fumes, Powders](#)

COD:

SVMRF000000RAPO



Pair of circular fittings made of galvanized steel, complete with flanges with holes for fixing to on suction and fan discharge and with edging prepared for collar on side of plant piping fixing.

## Insight

The SVM-R-F pair of fittings for centrifugal fans solves the problem of connecting centrifugal fans to the circular ducts of intake systems. It is offered with connection diameters sized according to the flow rates, but is produced with different diameters on request.

Suitable for outdoor installation, it is 100% compatible with MZ RM series fans.



## Related accessories



### Circular compression fitting for SVM-R-F fans

SVMRF000000RPRO

Circular galvanized steel fitting, complete with flange with borings for fixing to on fan discharge and beading prepared for collar on plant piping fixing side.



### Circular suction connector for SVM-R-F fans

SVMRF000000RAS0

Circular suction fitting for SVM-R-F fans made of galvanized steel, complete with flange with holes for fastening to on fan suction and beading prepared for collar on plant piping fastening side.



## Related Products



### SVM industrial centrifugal fans

SVM0000000000000

Industrial centrifugal fans with backward-bladed impeller SVM series



### SVR industrial centrifugal fans

SVR0000000000000

Industrial centrifugal fans with backward-bladed impeller SVR series



### SVF industrial centrifugal fans

SVF0000000000000

Industrial centrifugal fans with backward-bladed impeller SVF series

