

# Universal 4" PFUI double smoke outlet kit in AISI 304 for hot smoke

🔧 Sectors [Plant Components](#),

🔧 Applications [Fix](#)

🔧 Issues [Fumes](#)

COD: PFUI4P000000000

kit consisting of 2 x 4" smoke outlets in AISI 304 with universal connection for the application of sampling points on circular or rectangular section chimneys

## Insight

This patented smoke outlet allows samples to be taken from industrial chimneys that emit air into the atmosphere resulting from hot working processes, e.g., foundries.

Made of AISI 304 stainless steel in accordance with EN15259, mainly used in plants where there is a flow of hot air, this product is UNIVERSAL and therefore adaptable to all types of pipes with diameters from 250[mm] upwards, including rectangular pipes.

The fume extraction connection is a product necessary for taking samples from industrial chimneys.

This fume outlet fits all types of pipes:

-cylindrical, with diameters equal to and greater than 250 [mm];

-rectangular, i.e., on flat surfaces.

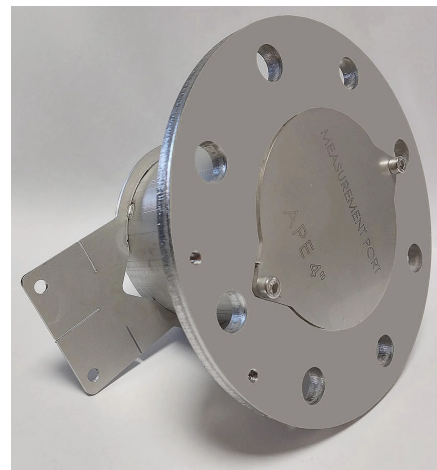
Therefore, no special modifications or adapters are required depending on the surface on which it is installed.

Created with the idea of replacing the traditional, commonly used, handcrafted smoke sampling connection with a standard, versatile commercial product, made to last (100% AISI 304 stainless steel).

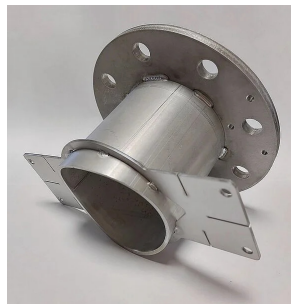
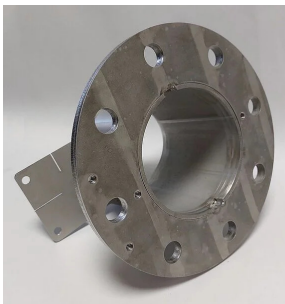
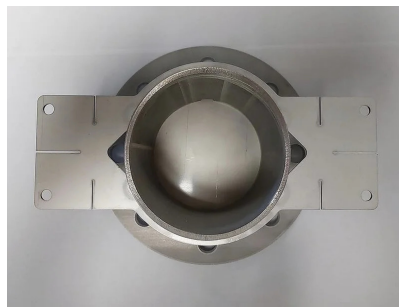
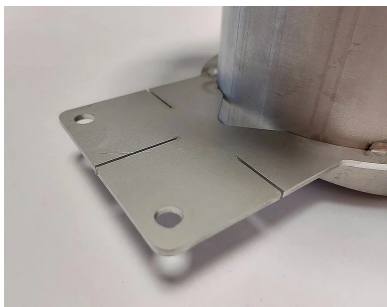
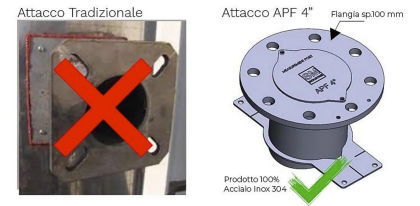
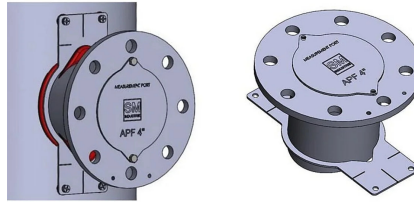
It consists of a central body equipped with fins for fixing to pipes and a flange for coupling with sampling probes, also equipped with a screw-on cap.

Specifically, the two side fins have notches that facilitate bending and therefore installation on all circular section pipes with a diameter of 250 [mm] up to rectangular sections.

The flange has two additional threaded holes that can be used to support and secure the cap and screws during sampling.



## Photogallery



## Related Products



### Universal flue gas inlet for atmospheric exhaust chimneys

PFU3000000000000

Universal flue gas inlet for making standardized sampling points on atmospheric emission chimneys.

