

MFU-HW welding fume extractor with red arm

📌 Sectors [Welding](#),

📌 Applications [Mobile](#)

📌 Issues [Fumes](#)

COD:

MFU21HWR0000000



MFU-HW mobile extractor for welding fumes and micro-dust with red arm, high performance for professional use, with HEPA H13 99.99% absolute filtration

Insight

Do not breathe in **fumes and micro-dust released into the environment during welding!** Rely on HEPA H13 filtration to reduce welding fumes and micro-dust using an **MFU welding fume extractor**, specifically designed to extract and filter fumes and micro-dust generated by metal welding processes, filtering 99.99% of particles larger than 0.3µm.

The MFU series of mobile extractors represent the state of the art in technology for the drastic reduction of risks derived from fumes and micro-dust in professional work environments. Pollutants are quickly extracted at the source thanks to the high-capacity hood and then filtered to 99.99% thanks to HEPA technology, which guarantees the reduction of micro-dust from 0.3 µm upwards.

For this reason, the MFU welding fume extractor is classified as W3 compliant for the filtration of carcinogens as required by UNI EN ISO 21904-1:2020.

Unique features of MFU

- Compact and easy to handle structure;
- Self-supporting suction arm with rigid pipes, working length 2, 3, or 4 meters;
- Air recirculation in the environment with absolute H13 HEPA filtration - 99.99%
- W3 certified for the filtration of carcinogens;
- On-board electrical panel with indicator light to signal filter clogging
- Hour meter for machine maintenance log keeping;
- Single-phase plug and cable with Schuko socket; no electrical installation required, ready to use;
- High-capacity extraction hood with handle for easy positioning

3-stage filtration in detail:

-stage 1: anti-spark metal filter eff. G3 (ISO 16890 Coarse 70%+)

-stage 2: acrylic filter eff. G4 (ISO 16890 Coarse 70%+)

-stage 3: absolute filter eff. H13 ≥99.95% @ MPPS in accordance with EN 1822:2019

How it works

The welding fume extractor purifies pollutants that pass through the system from the arm in the machine downwards and are purified with 99.99% efficiency. The clean air is returned to the environment through grilles located at the bottom of the sides of the machine, for maximum efficiency and energy savings.

Safety in accordance with regulations

The level of filter clogging is monitored by a control that alerts you with a light signal when the filters need to be cleaned or replaced, so that you can avoid continuing to work without air filtration.





ADVANTAGES

- Fast fume extraction close to the source due to high flow rate
- Mobile: allows a variety of welding spots to be reached
- Filtration with absolute filter eff. H13 $\geq 99.99\%$ of particles over $0.3\mu\text{m}$.
- 1500W single-phase power can be connected anywhere with a simple shuko socket

Advantages of buying with operational leasing in 12/24/36 or 48 convenient instalments

- No advance payments to be made, no pro-rata.
- First instalment on average at 30 days.
- Totally deducts rental fees for IRES purposes with no obligations arising from the minimum contract duration provided for by the T.U.
- Totally deducts royalties for IRAP purposes without distinction between capital and interest.
- Basel 2 advantage: thanks to the rental, the asset used is "off-asset" and therefore does not require corresponding assets.
- All-risk insurance included in the fees to cover possible claims.
- Fixed rate for the entire duration of the transaction.

Partner *BCC Lease*



Technical Data

Code	Power kW	Nominal flow rate m ³ / h	Liv son Db (A)	Weight kg	Long arm meters
MFU21HW2R000000	1,5	1500	73	102	2
MFU21HW3R000000	1,5	1500	73	102	3
MFU21HW4R000000	1,5	1500	73	102	4

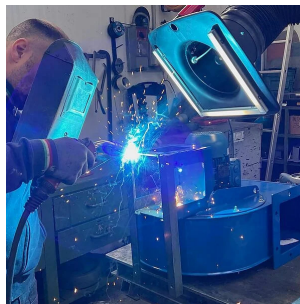
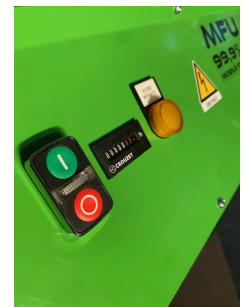
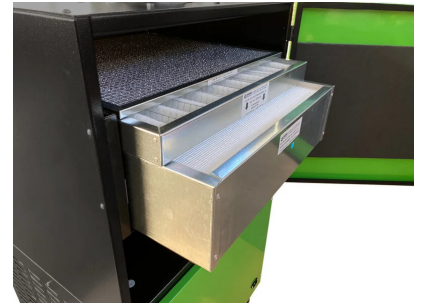


Technical Data

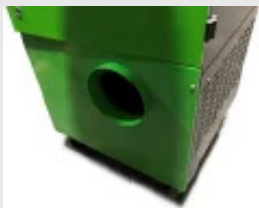
Code	Stage 1 filter	Stage 2 filter	Stage 3 filter
MFU21HWR0000000	metal anti-spark eff. G3	HEPA H13 $\geq 99,95\%$ @ MPPS acc. to EN 1822:2009	10 kg activated carbon



Photogallery



Related accessories



MFU filtered air exhaust connection on the outside

KITSCARICESTMFU

Lateral connection diam. 200 mm for hose to discharge filtered air outside from MFU purifiers all.



10kg activated carbon filter kit for MFU and WFU

MFU18WECA100000

10kg (2x5kg) activated carbon filter kit for all WFUs and MFUs 16 -18 - HW



17kg activated carbon filter kit for MFU

MFU21WECA170001

Replacement filter kit for 17 kg activated carbon filter stage - for all MFU purifiers from 2021 onward. Refillable version.



Related spare parts



Replacement filter kit S1-S2-S3 (no carbon) - for MFU-HW

Replacement filter kit S1-S2-S3 (no carbon) for MFU-HW all



Metal Filter Replacement - Stage 1 - MFU-HW

Metal Filter Replacement - Stage 1 - MFU-HW only



Replacement acrylic filter - Stage 2 - MFU-HW

Replacement acrylic filter - Stage 2 - MFU-HW only



Replacement filter H13 HEPA - Stage 3 - MFU-HW

Replacement H13 HEPA filter - Stage 3 - MFU-HW only



10kg activated carbon filter kit for MFU and WFU

10kg (2x5kg) activated carbon filter kit for all WFUs and MFUs 16 -18 - HW



Related Products



MFU-HW welding fume extractor with superflex arm

MFU21HWXF000000

High-performance mobile welding fume extractor for professional use, with HEPA H13 99.99% absolute filtration



MFU-HWF23 welding fume extractor double arm 3m

MFU21HW32F00000

MFU-HWF23 mobile welding fume extractor with double superflex arm, with H13 99.99% efficiency filtration.

