

Exhaust pipe connection for mini MFP cabin

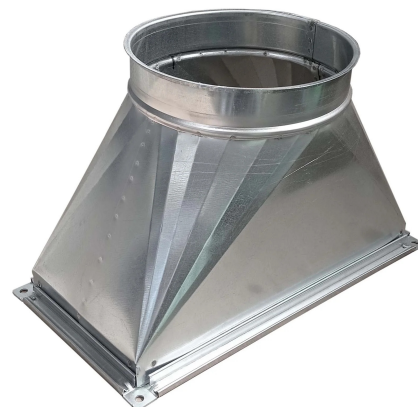
🔗 Sectors

🔗 Applications: **Fix**

🔗 Issues **VOC fumes**

COD:

MFPRACSCA000000



Exhaust pipe connection fitting for mini cabin MFP: supplied with drilled flange and hardware for cab roof mounting.

Detailed description

Exhaust pipe connection for MFP mini-cabin: required to connect the mini-cabin to an exhaust line outside.



Photogallery



Spare parts



MFP Mini suction cabin with filters and extractor

MFP0000000000000

The **mini MFP booth** is a true suction station with a convenient table top, usually used for small painting, gluing, nondestructive testing or other tasks that require a table top and safety ventilation provided by the suction front positioned in front of the operator so as to protect the respiratory tract.

