

Purlin box 15° for STCQ Torrini

COD: PB15STCQ0000000



Galvanized sheet metal support base equipped with insulating mat for installation on sloping roofs at an angle of 15° to avoid masonry or carpentry work and water stagnation near the fan.

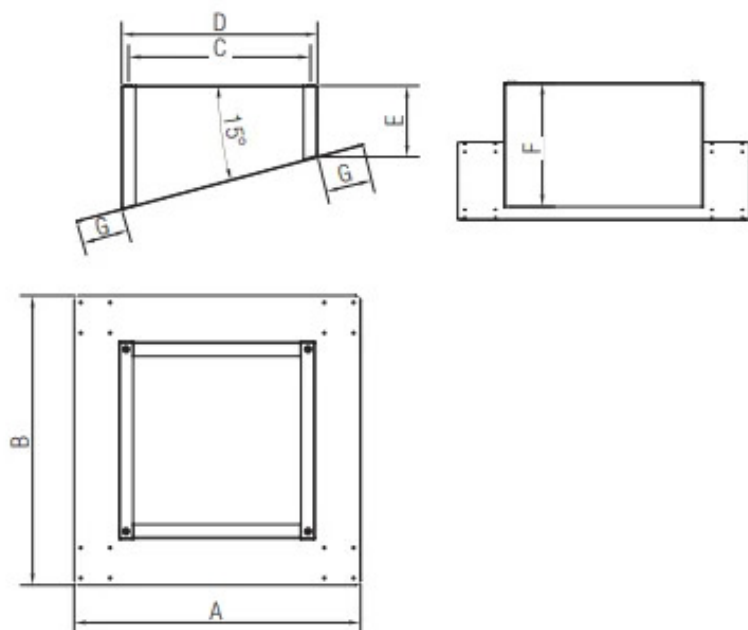
Detailed description

Galvanized sheet metal support base provided with insulation mat for installation on sloping roofs at an angle of 15° to avoid masonry or carpentry work and water stagnation near the fan.

Suitable for all **single-phase and three-phase STCQ** models.



Dimensions



Code	A mm	B mm	C mm	D mm	E mm	G mm	Ø F mm
PB15STC●2000000	635	620	390	420	150	100	263
PB15STC●4060000	750	730	490	530	175	100	318
PB15STC●8010000	870	850	600	650	200	100	375
PB15STC●1502000	1015	990	740	790	200	100	410

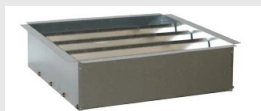
Accessories



Purlin box H300 for STCQ Torrini

PBH3STCQ0000000

Support base made of galvanized sheet metal with 0° inclination equipped with an insulating mat to ensure proper acoustic comfort and tightness.



Gravity Damper for STCQ Torrini

SRDGSTCQ0000000

Gravity damper for STCQ galvanized steel Torrini to prevent air leakage and heat loss fan off.



Spare parts



STC compact centrifugal Torrino extractor roof

STCQ00000000000

STC compact centrifugal fans for roof-tower installation are horizontal or vertical discharge (with appropriate accessory) and suitable for extracting air directly or through ductwork in environments where high head is required for commercial and industrial applications such as factories, gyms, industrial facilities, warehouses, kitchens, etc.

