

DFC11NBTX fume and dust extractor with ATEX components

📌 Sectors [Sanding, Welding, Grinding,](#)

📌 Applications [Mobile, Fix](#)

📌 Issues [Powders, Fumes](#)

COD: DFC11NBTX000000



The DFC11NBTX series mobile wheeled fume and dust extractor is designed for the extraction and filtration of fumes and micro-dust. This version is equipped with ATEX components.



Insight

The DFC11NBTX series wheeled fume and dust extractor is designed to extract and filter fumes and even very fine and volatile micro-dust generated during the surface treatment of metals or composite materials, or during the handling of dusty products.

The air, filtered with 99% efficiency, is returned to the environment or, on request, can be channeled outside where regulations do not allow recirculation.

Thanks to its compact size, wheels, and handles, it can be easily moved close to the work area and then used to extract fumes using the various accessories available or a simple flexible hose.

The DFC11NBTX version is equipped with ATEX components that reduce the risks associated with the extraction of potentially explosive dusts under certain conditions.

Please note that the user is responsible for verifying the characteristics of the dust being extracted (class and KST value) and must communicate this information during the product selection phase in order to verify the correct application of the extractor.

It is supplied to be connected to one or more suction pipes or with ATEX-certified articulated suction arms (see specific version).

ADVANTAGES

- Mobile: allows you to reach various welding points
- Dust and chip collection drawer located on the side of the machine, with nylon bag on request
- Filtration with cartridge filters $\geq 99\%$ (ANTISTATIC)
- Automatic filter cleaning with compressed air washing, for maximum energy savings and long filter element life
- 1100W power can be connected anywhere with a simple industrial socket
- Reduced maintenance thanks to automatic filter cleaning

TECHNICAL SPECIFICATIONS

- Sturdy galvanized sheet metal construction;
- explosion relief panel in AISI316L ATEX certified in accordance with Directive 2014/34/EU with relative vertical deflector
- 20 m² filtering surface with antistatic polyester cartridges;
- Automatic cleaning with compressed air;
- Fan with spark-proof nozzle and built-in 1.1 kW II 3D Ex tc IIIC T135°C Dc IP65 motor;
- On/off switch for suction;
- Handles for easy handling.
- Automatic filter cleaning with compressed air with on-board connection and condensate drain
- Version without arm, to be completed with suction fittings as required

GROUNDING FUNCTION WITH ANTISTATIC WHEELS

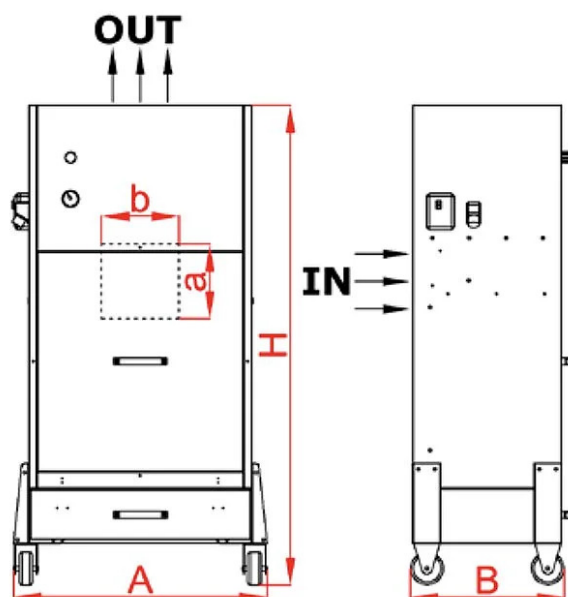
The galvanized sheet metal structure is conductive and discharges its charge through the 4 swivel wheels installed in the purifier.

Check that the floor on which the filter rests is also "conductive."

If the floor is not conductive, we recommend installing a socket on the purifier structure and connecting a screw or connector to a grounding braid.



Dimensions



See documentation for drawings and technical data sheet

Code	Drawer L	A mm	a mm	B mm	b mm	H mm
DFC11NBTX000000	40	810	270	540	280	1750

Technical Data

Code	Power kW	Nominal flow rate m ³ / h	Useful pressure Pa	Liv son Db (A)	Sup filter m ²	Filter effect %	Cartridges num.	Motor
DFC11NBTX000000	1.1 - 400V	2000	1000	79	20	99	2	Three-phase



Photogallery



Related accessories



Triple 100 mm connection with damper for DFC

3X100ASPMFC1100

Triple suction connection diam. 100 mm for DFC11



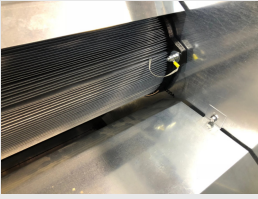
Hopper and dust collection container kit for DFC11 purifier

TRAMCONTDFC0000

Hopper and dust collection container kit for DFC11 purifier.



Related spare parts

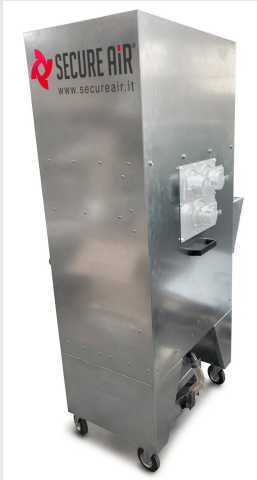


Replacement filter kit for antistatic cartridges for DFC11

Replacement filter kit for installation of antistatic cartridges on DFC11 purifiers



Related Products



DFC11NBM dust and fume extractor

DFC11NBM0000000

The DFC11 mobile dust and fume extractor with self-cleaning filters is the ideal solution for extracting and filtering fumes and micro-dust generated during surface treatment processes on metals or composite materials.

